

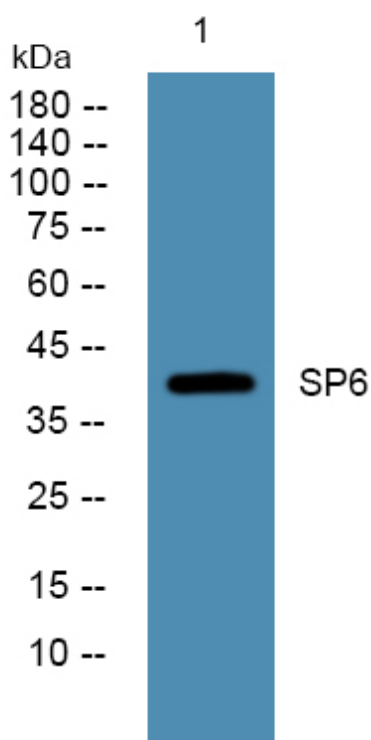


SP6 Polyclonal Antibody

Catalog No	YP-Ab-05205
Isotype	IgG
Reactivity	Human;Mouse
Applications	WB;ELISA
Gene Name	SP6 KLF14
Protein Name	Transcription factor Sp6 (Krueppel-like factor 14)
Immunogen	Synthesized peptide derived from human protein . at AA range: 150-230
Specificity	SP6 Polyclonal Antibody detects endogenous levels of protein.
Formulation	Liquid in PBS containing 50% glycerol, and 0.02% sodium azide.
Source	Polyclonal, Rabbit,IgG
Purification	The antibody was affinity-purified from rabbit antiserum by affinity-chromatography using epitope-specific immunogen.
Dilution	WB 1:500-2000 ELISA 1:5000-20000
Concentration	1 mg/ml
Purity	≥90%
Storage Stability	-20°C/1 year
Synonyms	
Observed Band	41kD
Cell Pathway	Nucleus .
Tissue Specificity	Ubiquitous.
Function	function:Promotes cell proliferation.,similarity:Belongs to the Sp1 C2H2-type zinc-finger protein family.,similarity:Contains 3 C2H2-type zinc fingers.,tissue specificity:Ubiquitous.,
Background	SP6 belongs to a family of transcription factors that contain 3 classical zinc finger DNA-binding domains consisting of a zinc atom tetrahedrally coordinated by 2 cysteines and 2 histidines (C2H2 motif). These transcription factors bind to GC-rich sequences and related GT and CACCC boxes (Schohy et al., 2000 [PubMed 11087666]).[supplied by OMIM, Mar 2008],
matters needing attention	Avoid repeated freezing and thawing!
Usage suggestions	This product can be used in immunological reaction related experiments. For more information, please consult technical personnel.



Products Images



Western blot analysis of lysates from K562 cells,
primary antibody was diluted at 1:1000, 4°over night