

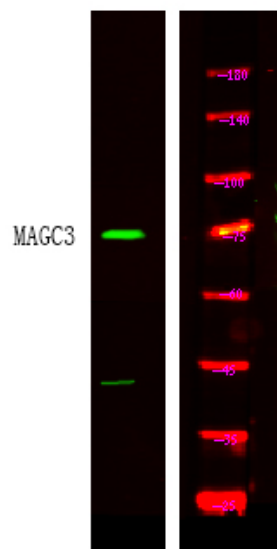


MAGC3 Polyclonal Antibody

Catalog No	YP-Ab-05133
Isotype	IgG
Reactivity	Human;Rat;Mouse;
Applications	WB;ELISA
Gene Name	MAGEC3 HCA2
Protein Name	Melanoma-associated antigen C3 (Cancer/testis antigen 7.2) (CT7.2) (Hepatocellular carcinoma-associated antigen 2) (MAGE-C3 antigen)
Immunogen	Synthesized peptide derived from human protein . at AA range: 60-140
Specificity	MAGC3 Polyclonal Antibody detects endogenous levels of protein.
Formulation	Liquid in PBS containing 50% glycerol, and 0.02% sodium azide.
Source	Polyclonal, Rabbit,IgG
Purification	The antibody was affinity-purified from rabbit antiserum by affinity-chromatography using epitope-specific immunogen.
Dilution	WB 1:500-2000 ELISA 1:5000-20000
Concentration	1 mg/ml
Purity	≥90%
Storage Stability	-20°C/1 year
Synonyms	
Observed Band	70kD
Cell Pathway	
Tissue Specificity	Expressed in testis. Not expressed in other normal tissues, but is expressed in tumors of different histological origins.
Function	similarity:Contains 2 MAGE domains.,tissue specificity:Expressed in testis. Not expressed in other normal tissues, but is expressed in tumors of different histological origins.,
Background	This gene is a member of the MAGEC gene family. The members of this family are not expressed in normal tissues, except for testis, and are expressed in tumors of various histological types. The MAGEC genes are clustered on chromosome Xq26-q27. Two transcript variants encoding distinct isoforms have been found for this gene. [provided by RefSeq, Jul 2008],
matters needing attention	Avoid repeated freezing and thawing!
Usage suggestions	This product can be used in immunological reaction related experiments. For more information, please consult technical personnel.



Products Images



Western Blot analysis of HEK293 lysis, using primary antibody at 1:1000 dilution. Secondary antibody(catalog#:RS23920) was diluted at 1:10000