



ITBP2 Polyclonal Antibody

Catalog No	YP-Ab-05111
Isotype	IgG
Reactivity	Human;Mouse
Applications	WB;ELISA
Gene Name	ITGB1BP2 MSTP015
Protein Name	Integrin beta-1-binding protein 2 (Melusin)
Immunogen	Synthesized peptide derived from human protein . at AA range: 10-90
Specificity	ITBP2 Polyclonal Antibody detects endogenous levels of protein.
Formulation	Liquid in PBS containing 50% glycerol, and 0.02% sodium azide.
Source	Polyclonal, Rabbit,IgG
Purification	The antibody was affinity-purified from rabbit antiserum by affinity-chromatography using epitope-specific immunogen.
Dilution	WB 1:500-2000 ELISA 1:5000-20000
Concentration	1 mg/ml
Purity	≥90%
Storage Stability	-20°C/1 year
Synonyms	
Observed Band	38kD
Cell Pathway	Z disc,
Tissue Specificity	Expressed in skeletal and cardiac muscles but not in other tissues.
Function	domain:The tail domain binds to the cytoplasmic domain of both integrin beta-1a and beta-1d isoforms. The presence of Ca(2+) ions does not prevent binding of a fragment consisting of the second cysteine rich repeat and the tail domain but prevents the binding of the full-length protein.,function:May play a role during maturation and/or organization of muscles cells.,similarity:Contains 1 CS domain.,similarity:Contains 2 CHORD domains.,subunit:Interacts with beta-1 integrin subunit. This interaction is regulated by divalent cations, and it occurs only in absence of calcium.,tissue specificity:Expressed in skeletal and cardiac muscles but not in other tissues.,
Background	domain:The tail domain binds to the cytoplasmic domain of both integrin beta-1a and beta-1d isoforms. The presence of Ca(2+) ions does not prevent binding of a fragment consisting of the second cysteine rich repeat and the tail domain but prevents the binding of the full-length protein.,function:May play a role during maturation and/or organization of muscles cells.,similarity:Contains 1 CS domain.,similarity:Contains 2 CHORD domains.,subunit:Interacts with beta-1



integrin subunit. This interaction is regulated by divalent cations, and it occurs only in absence of calcium.,tissue specificity:Expressed in skeletal and cardiac muscles but not in other tissues.,

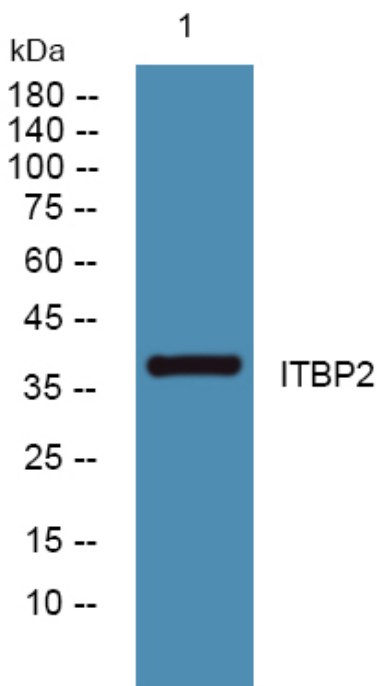
matters needing attention

Avoid repeated freezing and thawing!

Usage suggestions

This product can be used in immunological reaction related experiments. For more information, please consult technical personnel.

Products Images



Western blot analysis of lysates from K562 cells, primary antibody was diluted at 1:1000, 4° over night