

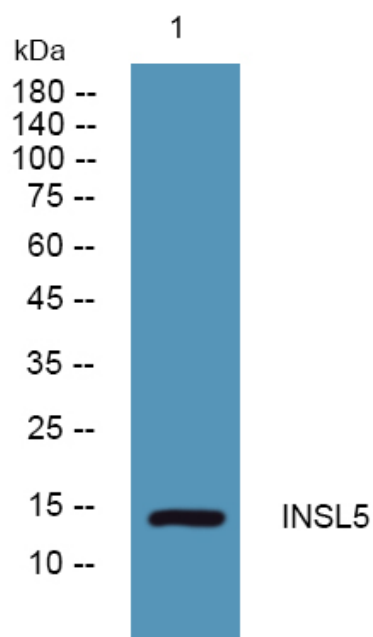


INSL5 Polyclonal Antibody

Catalog No	YP-Ab-05108
Isotype	IgG
Reactivity	Human;Mouse
Applications	WB;ELISA
Gene Name	INSL5 UNQ156/PRO182
Protein Name	Insulin-like peptide INSL5 (Insulin-like peptide 5) [Cleaved into: Insulin-like peptide INSL5 B chain; Insulin-like peptide INSL5 A chain]
Immunogen	Synthesized peptide derived from human protein . at AA range: 30-110
Specificity	INSL5 Polyclonal Antibody detects endogenous levels of protein.
Formulation	Liquid in PBS containing 50% glycerol, and 0.02% sodium azide.
Source	Polyclonal, Rabbit,IgG
Purification	The antibody was affinity-purified from rabbit antiserum by affinity-chromatography using epitope-specific immunogen.
Dilution	WB 1:500-2000 ELISA 1:5000-20000
Concentration	1 mg/ml
Purity	≥90%
Storage Stability	-20°C/1 year
Synonyms	
Observed Band	14kD
Cell Pathway	Secreted.
Tissue Specificity	Highly expressed in rectum with lower levels in uterus and ascending and descending colon.
Function	function:May have a role in gut contractility or in thymic development and regulation.,similarity:Belongs to the insulin family.,subunit:Heterodimer of a B chain and an A chain linked by two disulfide bonds.,tissue specificity:Highly expressed in rectum with lower levels in uterus and ascending and descending colon.,
Background	The protein encoded by this gene contains a classical signature of the insulin superfamily and is highly similar to relaxin 3 (RLN3/INSL7). [provided by RefSeq, Jul 2008],
matters needing attention	Avoid repeated freezing and thawing!
Usage suggestions	This product can be used in immunological reaction related experiments. For more information, please consult technical personnel.



Products Images



Western blot analysis of lysates from K562 cells,
primary antibody was diluted at 1:1000, 4°over night