



INSI2 Polyclonal Antibody

Catalog No	YP-Ab-05107
Isotype	IgG
Reactivity	Human;Mouse;Rat
Applications	WB;ELISA
Gene Name	INSIG2
Protein Name	Insulin-induced gene 2 protein (INSIG-2)
Immunogen	Synthesized peptide derived from human protein . at AA range: 40-120
Specificity	INSI2 Polyclonal Antibody detects endogenous levels of protein.
Formulation	Liquid in PBS containing 50% glycerol, and 0.02% sodium azide.
Source	Polyclonal, Rabbit,IgG
Purification	The antibody was affinity-purified from rabbit antiserum by affinity-chromatography using epitope-specific immunogen.
Dilution	WB 1:500-2000 ELISA 1:5000-20000
Concentration	1 mg/ml
Purity	≥90%
Storage Stability	-20°C/1 year
Synonyms	
Observed Band	24kD
Cell Pathway	Endoplasmic reticulum membrane ; Multi-pass membrane protein .
Tissue Specificity	Brain,Hypothalamus,Pituitary,
Function	function:Mediates feedback control of cholesterol synthesis by controlling SCAP and HMGCR. Functions by blocking the processing of sterol regulatory element-binding proteins (SREBPs). Capable of retaining the SCAP-SREBF2 complex in the ER thus preventing it from escorting SREBPs to the Golgi. Seems to regulate the ubiquitin-mediated proteasomal degradation of HMGCR.,miscellaneous:Does not require nuclear SREBPs for its expression. When nuclear SREBP activity is low, is the only form of INSIG present in the cell.,similarity:Belongs to the INSIG family.,subunit:Binds to the SCAP-SREBF2 complex only in the presence of sterols.,
Background	The protein encoded by this gene is highly similar to the protein product encoded by gene INSIG1. Both INSIG1 protein and this protein are endoplasmic reticulum proteins that block the processing of sterol regulatory element binding proteins (SREBPs) by binding to SREBP cleavage-activating protein (SCAP), and thus prevent SCAP from escorting SREBPs to the Golgi. [provided by RefSeq, Jul 2008],

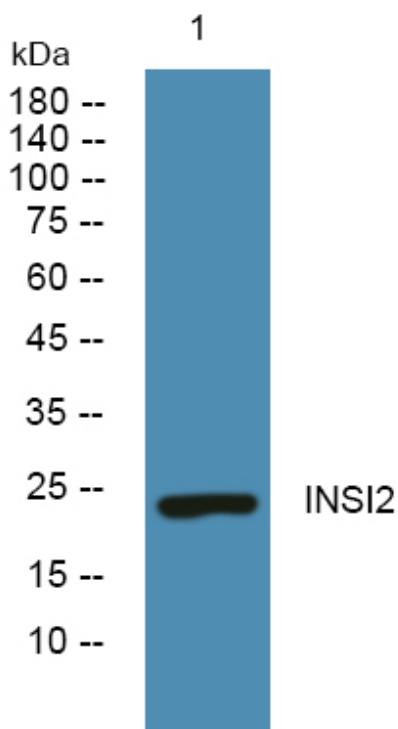
matters needing attention

Avoid repeated freezing and thawing!

Usage suggestions

This product can be used in immunological reaction related experiments. For more information, please consult technical personnel.

Products Images



Western blot analysis of lysates from SH-SY5Y cells, primary antibody was diluted at 1:1000, 4° over night