

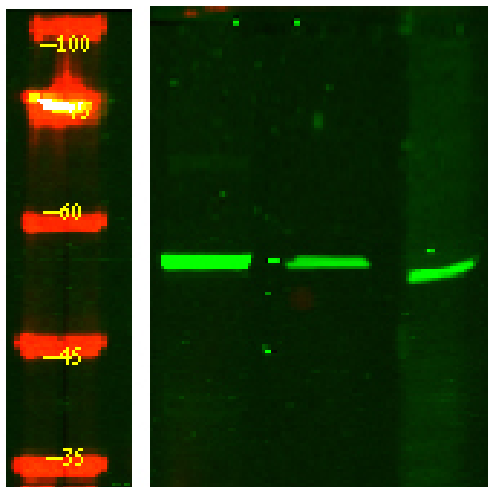


# IFRD2 Polyclonal Antibody

Catalog No	YP-Ab-05099
Isotype	IgG
Reactivity	Human;Rat;Mouse;
Applications	WB;ELISA
Gene Name	IFRD2
Protein Name	Interferon-related developmental regulator 2 (Protein SKMC15)
Immunogen	Synthesized peptide derived from human protein . at AA range: 260-340
Specificity	IFRD2 Polyclonal Antibody detects endogenous levels of protein.
Formulation	Liquid in PBS containing 50% glycerol, and 0.02% sodium azide.
Source	Polyclonal, Rabbit,IgG
Purification	The antibody was affinity-purified from rabbit antiserum by affinity-chromatography using epitope-specific immunogen.
Dilution	WB 1:500-2000 ELISA 1:5000-20000
Concentration	1 mg/ml
Purity	≥90%
Storage Stability	-20°C/1 year
Synonyms	
Observed Band	55kD
Cell Pathway	nucleus,
Tissue Specificity	Expressed in a variety of tissues.
Function	similarity:Belongs to the IFRD family.,tissue specificity:Expressed in a variety of tissues.,
Background	similarity:Belongs to the IFRD family.,tissue specificity:Expressed in a variety of tissues.,
matters needing attention	Avoid repeated freezing and thawing!
Usage suggestions	This product can be used in immunological reaction related experiments. For more information, please consult technical personnel.



## Products Images



Western Blot analysis of HEK293 lysis, using primary antibody at 1:1000 dilution. Secondary antibody(catalog#:RS23920) was diluted at 1:10000