

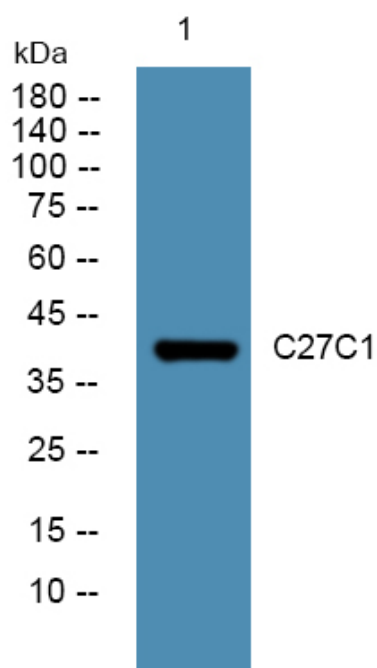


# C27C1 Polyclonal Antibody

<b>Catalog No</b>	YP-Ab-05054
<b>Isotype</b>	IgG
<b>Reactivity</b>	Human;Rat;Mouse;
<b>Applications</b>	WB;ELISA
<b>Gene Name</b>	CYP27C1
<b>Protein Name</b>	Cytochrome P450 27C1 (EC 1.14.-.-)
<b>Immunogen</b>	Synthesized peptide derived from human protein . at AA range: 80-160
<b>Specificity</b>	C27C1 Polyclonal Antibody detects endogenous levels of protein.
<b>Formulation</b>	Liquid in PBS containing 50% glycerol, and 0.02% sodium azide.
<b>Source</b>	Polyclonal, Rabbit,IgG
<b>Purification</b>	The antibody was affinity-purified from rabbit antiserum by affinity-chromatography using epitope-specific immunogen.
<b>Dilution</b>	WB 1:500-2000 ELISA 1:5000-20000
<b>Concentration</b>	1 mg/ml
<b>Purity</b>	≥90%
<b>Storage Stability</b>	-20°C/1 year
<b>Synonyms</b>	
<b>Observed Band</b>	40kD
<b>Cell Pathway</b>	[Isoform 2]: Mitochondrion membrane ; Peripheral membrane protein .
<b>Tissue Specificity</b>	Widely expressed, with highest levels in the liver, kidney and pancreas. ; [Isoform 2]: Expressed in the skin (at protein level).
<b>Function</b>	cofactor:Heme group.,similarity:Belongs to the cytochrome P450 family.,
<b>Background</b>	cytochrome P450 family 27 subfamily C member 1(CYP27C1) Homo sapiens This gene encodes a member of the cytochrome P450 superfamily of enzymes. The cytochrome P450 proteins are monooxygenases which catalyze many reactions involved in drug metabolism and synthesis of cholesterol, steroids and other lipids. [provided by RefSeq, Jul 2008],
<b>matters needing attention</b>	Avoid repeated freezing and thawing!
<b>Usage suggestions</b>	This product can be used in immunological reaction related experiments. For more information, please consult technical personnel.



## Products Images



Western blot analysis of lysates from K562 cells,  
primary antibody was diluted at 1:1000, 4° over night