



WNK2 Polyclonal Antibody

Catalog No	YP-Ab-05038
Isotype	IgG
Reactivity	Human;Mouse
Applications	IHC;IF
Gene Name	WNK2 KIAA1760 PRKWNK2 SDCCAG43 P/OKcl.13
Protein Name	Serine/threonine-protein kinase WNK2 (EC 2.7.11.1) (Antigen NY-CO-43) (Protein kinase lysine-deficient 2) (Protein kinase with no lysine 2) (Serologically defined colon cancer antigen 43)
Immunogen	Synthesized peptide derived from human protein . at AA range: 1120-1200
Specificity	WNK2 Polyclonal Antibody detects endogenous levels of protein.
Formulation	Liquid in PBS containing 50% glycerol, and 0.02% sodium azide.
Source	Polyclonal, Rabbit,IgG
Purification	The antibody was affinity-purified from rabbit antiserum by affinity-chromatography using epitope-specific immunogen.
Dilution	IHC-p 1:50-300. IF 1:50-200
Concentration	1 mg/ml
Purity	≥90%
Storage Stability	-20°C/1 year
Synonyms	
Observed Band	252kD
Cell Pathway	Cytoplasm . Cell membrane .
Tissue Specificity	Expressed in various cancer cell lines (at protein level). Predominantly expressed in heart, brain, skeletal muscle and colon.
Function	catalytic activity:ATP + a protein = ADP + a phosphoprotein.,caution:Cys-224 is present instead of the conserved Lys which is expected to be an active site residue. Lys-207 appears to fulfill the required catalytic function.,cofactor:Magnesium.,enzyme regulation:Activation requires autophosphorylation of Ser-356. Phosphorylation of Ser-352 also promotes increased activity.,similarity:Belongs to the protein kinase superfamily. Ser/Thr protein kinase family. WNK subfamily.,similarity:Contains 1 protein kinase domain.,tissue specificity:Predominantly expressed in heart, brain and colon.,
Background	The protein encoded by this gene is a cytoplasmic serine-threonine kinase that belongs to the protein kinase superfamily. The protein plays an important role in the regulation of electrolyte homeostasis, cell signaling survival, and proliferation. Alternative splicing results in multiple transcript variants. [provided by RefSeq, Sep 2013],

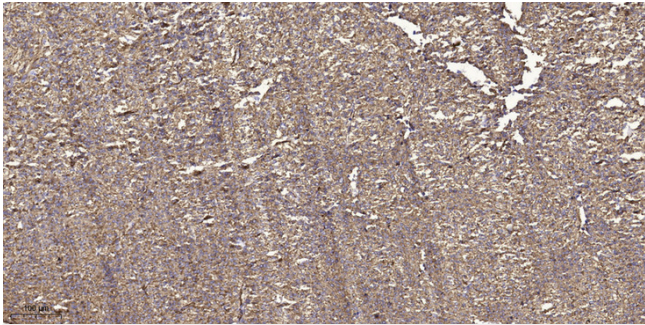
**matters needing attention**

Avoid repeated freezing and thawing!

Usage suggestions

This product can be used in immunological reaction related experiments. For more information, please consult technical personnel.

Products Images



Immunohistochemical analysis of paraffin-embedded human small intestinal carcinoma tissue. 1,primary Antibody was diluted at 1:200(4° overnight). 2, Sodium citrate pH 6.0 was used for antigen retrieval(>98° C,20min). 3,Secondary antibody was diluted at 1:200