

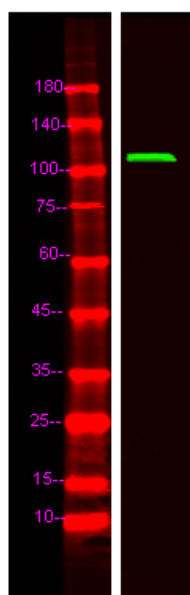


# TR150 Polyclonal Antibody

<b>Catalog No</b>	YP-Ab-05037
<b>Isotype</b>	IgG
<b>Reactivity</b>	Human;Mouse;Rat
<b>Applications</b>	WB;ELISA
<b>Gene Name</b>	THRAP3 TRAP150
<b>Protein Name</b>	Thyroid hormone receptor-associated protein 3 (Thyroid hormone receptor-associated protein complex 150 kDa component) (Trap150)
<b>Immunogen</b>	Synthesized peptide derived from human protein . at AA range: 110-190
<b>Specificity</b>	TR150 Polyclonal Antibody detects endogenous levels of protein.
<b>Formulation</b>	Liquid in PBS containing 50% glycerol, and 0.02% sodium azide.
<b>Source</b>	Polyclonal, Rabbit,IgG
<b>Purification</b>	The antibody was affinity-purified from rabbit antiserum by affinity-chromatography using epitope-specific immunogen.
<b>Dilution</b>	WB 1:500-2000 ELISA 1:5000-20000
<b>Concentration</b>	1 mg/ml
<b>Purity</b>	≥90%
<b>Storage Stability</b>	-20°C/1 year
<b>Synonyms</b>	
<b>Observed Band</b>	105kD
<b>Cell Pathway</b>	Nucleus . Nucleus, nucleoplasm . Nucleus speckle .
<b>Tissue Specificity</b>	Ubiquitous.
<b>Function</b>	function:Plays a role in transcriptional coactivation.,PTM:Phosphorylated upon DNA damage, probably by ATM or ATR.,sequence caution:Contaminating sequence. Potential poly-A sequence.,subunit:Subunit of the large multiprotein complex TRAP.,tissue specificity:Ubiquitous.,
<b>Background</b>	function:Plays a role in transcriptional coactivation.,PTM:Phosphorylated upon DNA damage, probably by ATM or ATR.,sequence caution:Contaminating sequence. Potential poly-A sequence.,subunit:Subunit of the large multiprotein complex TRAP.,tissue specificity:Ubiquitous.,
<b>matters needing attention</b>	Avoid repeated freezing and thawing!
<b>Usage suggestions</b>	This product can be used in immunological reaction related experiments. For more information, please consult technical personnel.



## Products Images



Western Blot analysis of Hela lysis, using primary antibody at 1:1000 dilution. Secondary antibody(catalog#:RS23920) was diluted at 1:10000