



TAF10 Polyclonal Antibody

Catalog No	YP-Ab-04983
Isotype	IgG
Reactivity	Human;Mouse
Applications	WB;ELISA
Gene Name	TAF10 TAF2A TAF2H TAFII30
Protein Name	Transcription initiation factor TFIID subunit 10 (STAF28) (Transcription initiation factor TFIID 30 kDa subunit) (TAF(II)30) (TAFII-30) (TAFII30)
Immunogen	Synthesized peptide derived from human protein . at AA range: 130-210
Specificity	TAF10 Polyclonal Antibody detects endogenous levels of protein.
Formulation	Liquid in PBS containing 50% glycerol, and 0.02% sodium azide.
Source	Polyclonal, Rabbit,IgG
Purification	The antibody was affinity-purified from rabbit antiserum by affinity-chromatography using epitope-specific immunogen.
Dilution	WB 1:500-2000 ELISA 1:5000-20000
Concentration	1 mg/ml
Purity	≥90%
Storage Stability	-20°C/1 year
Synonyms	
Observed Band	23kD
Cell Pathway	Nucleus .
Tissue Specificity	Kidney,Liver,Placenta,
Function	domain:The [KR]-[STA]-K motif is specifically recognized by the SETD7 methyltransferase.,function:TAFs are components of the transcription factor IID (TFIID) complex, PCAF histone acetylase complex and TBP-free TAFII complex (TFTC). TIIFD is a multimeric protein complex that plays a central role in mediating promoter responses to various activators and repressors.,PTM:Monomethylated at Lys-189 by SETD7, leading to increase its affinity for RNA polymerase II.,similarity:Belongs to the TAF10 family.,subunit:TFIID and PCAF are composed of TATA binding protein (TBP) and a number of TBP-associated factors (TAFs). TBP is not part of TFTC. Component of the PCAF complex, at least composed of TADA2L/ADA2, TADA3L/ADA3, SUPT3H, TAF5L TAF6L, TAF9, TAF10, TAF12 and TRRAP. Component of the TFTC-HAT complex, at least composed of TAF5L, TAF6L, TADA3L, SUPT3H, TAF2, TAF4, TAF5, GCN5L2/GCN5, TAF10 and TRR
Background	Initiation of transcription by RNA polymerase II requires the activities of more than 70 polypeptides. The protein that coordinates these activities is transcription



factor IID (TFIID), which binds to the core promoter to position the polymerase properly, serves as the scaffold for assembly of the remainder of the transcription complex, and acts as a channel for regulatory signals. TFIID is composed of the TATA-binding protein (TBP) and a group of evolutionarily conserved proteins known as TBP-associated factors or TAFs. TAFs may participate in basal transcription, serve as coactivators, function in promoter recognition or modify general transcription factors (GTFs) to facilitate complex assembly and transcription initiation. This gene encodes one of the small subunits of TFIID that is associated with a subset of TFIID complexes. Studies with human and mammalian cells have sh

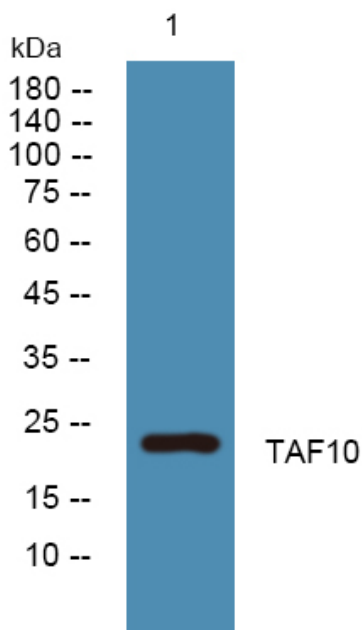
matters needing attention

Avoid repeated freezing and thawing!

Usage suggestions

This product can be used in immunological reaction related experiments. For more information, please consult technical personnel.

Products Images



Western blot analysis of lysates from SW480 cells, primary antibody was diluted at 1:1000, 4° over night