



FOXM1 Polyclonal Antibody

Catalog No	YP-Ab-04980
Isotype	IgG
Reactivity	Human;Mouse;Rat
Applications	WB;ELISA
Gene Name	FOXM1 FKHL16 HFH11 MPP2 WIN
Protein Name	Forkhead box protein M1 (Forkhead-related protein FKHL16) (Hepatocyte nuclear factor 3 forkhead homolog 11) (HFH-11) (HNF-3/fork-head homolog 11) (M-phase phosphoprotein 2) (MPM-2 reactive phosphoprot
Immunogen	Synthesized peptide derived from human protein . at AA range: 190-270
Specificity	FOXM1 Polyclonal Antibody detects endogenous levels of protein.
Formulation	Liquid in PBS containing 50% glycerol, and 0.02% sodium azide.
Source	Polyclonal, Rabbit,IgG
Purification	The antibody was affinity-purified from rabbit antiserum by affinity-chromatography using epitope-specific immunogen.
Dilution	WB 1:500-2000 ELISA 1:5000-20000
Concentration	1 mg/ml
Purity	≥90%
Storage Stability	-20°C/1 year
Synonyms	
Observed Band	83kD
Cell Pathway	Nucleus.
Tissue Specificity	Expressed in thymus, testis, small intestine, colon followed by ovary. Appears to be expressed only in adult organs containing proliferating/cycling cells or in response to growth factors. Also expressed in epithelial cell lines derived from tumors. Not expressed in resting cells. Isoform 2 is highly expressed in testis.
Function	alternative products:Isoform 1 and isoform 2 appear to be the only activators of gene transcription. Isoform 3, found in rat, does not seem to exist in human,developmental stage:Embryonic expression pattern: liver, lung, intestine, kidney, urinary tract; adult expression pattern: intestine, colon, testis and thymus.,domain:Within the protein there is a domain which acts as a transcriptional activator. Insertion of a splicing sequence within it inactivates this transcriptional activity, as it is the case for isoform 4.,function:Transcriptional activatory factor. May play a role in the control of cell proliferation.,induction:Induced during liver regeneration and oxidative stress.,PTM:Phosphorylated in M (mitotic) phase.,similarity:Contains 1 fork-head DNA-binding domain.,tissue specificity:Expressed in thymus, testis, small intestine, colon followed by ovary. Appears to be expressed only



Background

The protein encoded by this gene is a transcriptional activator involved in cell proliferation. The encoded protein is phosphorylated in M phase and regulates the expression of several cell cycle genes, such as cyclin B1 and cyclin D1. Several transcript variants encoding different isoforms have been found for this gene. [provided by RefSeq, Jul 2011],

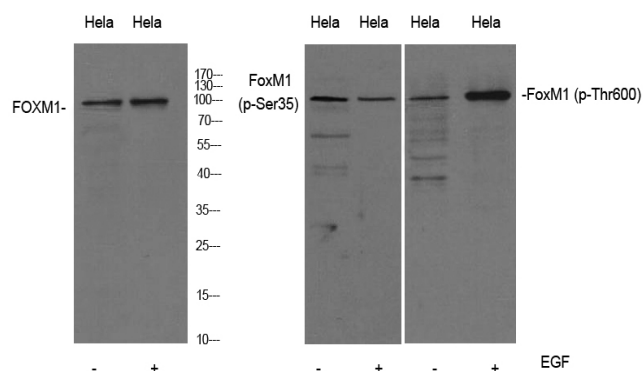
matters needing attention

Avoid repeated freezing and thawing!

Usage suggestions

This product can be used in immunological reaction related experiments. For more information, please consult technical personnel.

Products Images



Western Blot analysis of HeLa cell lysis treated or untreated by EGF 20ng/ml 30'.. Primary Antibody was diluted at 1:1000. Secondary antibody(catalog#:RS23920) was diluted at 1:10000