



U2AF1 Polyclonal Antibody

Catalog No	YP-Ab-04978
Isotype	IgG
Reactivity	Human;Mouse
Applications	WB;ELISA
Gene Name	U2AF1 U2AF35 U2AFBP FP793
Protein Name	Splicing factor U2AF 35 kDa subunit (U2 auxiliary factor 35 kDa subunit) (U2 small nuclear RNA auxiliary factor 1) (U2 snRNP auxiliary factor small subunit)
Immunogen	Synthesized peptide derived from human protein . at AA range: 60-140
Specificity	U2AF1 Polyclonal Antibody detects endogenous levels of protein.
Formulation	Liquid in PBS containing 50% glycerol, and 0.02% sodium azide.
Source	Polyclonal, Rabbit,IgG
Purification	The antibody was affinity-purified from rabbit antiserum by affinity-chromatography using epitope-specific immunogen.
Dilution	WB 1:500-2000 ELISA 1:5000-20000
Concentration	1 mg/ml
Purity	≥90%
Storage Stability	-20°C/1 year
Synonyms	
Observed Band	26kD
Cell Pathway	Nucleus . Nucleus speckle .
Tissue Specificity	B-cell lymphoma,Bone marrow,Epithelium,Fetal brain,Lung,Prostate,Sp
Function	domain:The C-terminal SR-rich domain is required for interactions with SR proteins and the splicing regulators TRA and TRA2, and the N-terminal domain is required for formation of the U2AF1/U2AF2 heterodimer.,function:Plays a critical role in both constitutive and enhancer-dependent splicing by mediating protein-protein interactions and protein-RNA interactions required for accurate 3'-splice site selection. Recruits U2 snRNP to the branch point. Directly mediates interactions between U2AF2 and proteins bound to the enhancers and thus may function as a bridge between U2AF2 and the enhancer complex to recruit it to the adjacent intron.,PTM:Phosphorylated upon DNA damage, probably by ATM or ATR.,similarity:Belongs to the splicing factor SR family.,similarity:Contains 1 RRM (RNA recognition motif) domain.,similarity:Contains 2 C3H1-type zinc fingers.,subunit:Identified in the spliceosome C
Background	This gene belongs to the splicing factor SR family of genes. U2 auxiliary factor, comprising a large and a small subunit, is a non-snRNP protein required for the binding of U2 snRNP to the pre-mRNA branch site. This gene encodes the small



subunit which plays a critical role in both constitutive and enhancer-dependent RNA splicing by directly mediating interactions between the large subunit and proteins bound to the enhancers. Alternatively spliced transcript variants encoding different isoforms have been identified. [provided by RefSeq, Jul 2008],

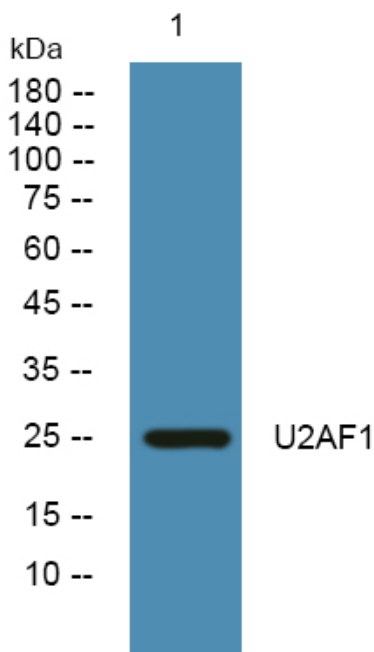
matters needing attention

Avoid repeated freezing and thawing!

Usage suggestions

This product can be used in immunological reaction related experiments. For more information, please consult technical personnel.

Products Images



Western blot analysis of lysates from K562 cells, primary antibody was diluted at 1:1000, 4° over night