



T2AG Polyclonal Antibody

Catalog No	YP-Ab-04972
Isotype	IgG
Reactivity	Human;Mouse;Rat
Applications	WB;ELISA
Gene Name	GTF2A2 TF2A2
Protein Name	Transcription initiation factor IIA subunit 2 (General transcription factor IIA subunit 2) (TFIIA p12 subunit) (TFIIA-12) (TFIIAS) (Transcription initiation factor IIA gamma chain) (TFIIA-gamma)
Immunogen	Synthesized peptide derived from human protein . at AA range: 30-110
Specificity	T2AG Polyclonal Antibody detects endogenous levels of protein.
Formulation	Liquid in PBS containing 50% glycerol, and 0.02% sodium azide.
Source	Polyclonal, Rabbit,IgG
Purification	The antibody was affinity-purified from rabbit antiserum by affinity-chromatography using epitope-specific immunogen.
Dilution	WB 1:500-2000 ELISA 1:5000-20000
Concentration	1 mg/ml
Purity	≥90%
Storage Stability	-20°C/1 year
Synonyms	
Observed Band	11kD
Cell Pathway	Nucleus.
Tissue Specificity	Lung,Small intestine,
Function	function:TFIIA is a component of the transcription machinery of RNA polymerase II and plays an important role in transcriptional activation. TFIIA in a complex with TBP mediates transcriptional activity.,similarity:Belongs to the TFIIA subunit 2 family.,subunit:TFIIA is a heterodimer of the large unprocessed subunit 1 and a small subunit gamma. It was originally believed to be a heterotrimer of an alpha (p35), a beta (p19) and a gamma subunit (p12). Interacts with NCOA6 general coactivator (By similarity). TFIIA forms a complex with TBP. Interacts with SV40 Large T antigen.,
Background	Accurate transcription initiation on TATA-containing class II genes involves the ordered assembly of RNA polymerase II (POLR2A; MIM 180660) and the general initiation factors TFIIA, TFIIIB (MIM 189963), TFIID (MIM 313650), TFIIE (MIM 189962), TFIIIF (MIM 189968), TFIIG/TFIIJ, and TFIIH (MIM 189972). The first step involves recognition of the TATA element by the TATA-binding subunit (TBP; MIM 600075) and may be regulated by TFIIA, a factor that interacts with both TBP



and a TBP-associated factor (TAF; MIM 600475) in TFIID. TFIIA has 2 subunits (43 and 12 kD) in yeast and 3 subunits in higher eukaryotes. In HeLa extracts, it consists of a 35-kD alpha subunit and a 19-kD beta subunit encoded by the N- and C-terminal regions of GTF2A1 (MIM 600520), respectively, and a 12-kD gamma subunit encoded by GTF2A2 (DeJong et al., 1995 [PubMed 7724559]).[supplied by OMIM, Mar 2008],

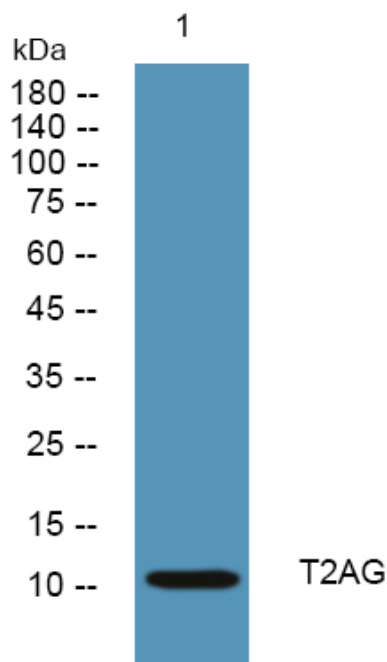
matters needing attention

Avoid repeated freezing and thawing!

Usage suggestions

This product can be used in immunological reaction related experiments. For more information, please consult technical personnel.

Products Images



Western blot analysis of lysates from SW480 cells, primary antibody was diluted at 1:1000, 4° over night