

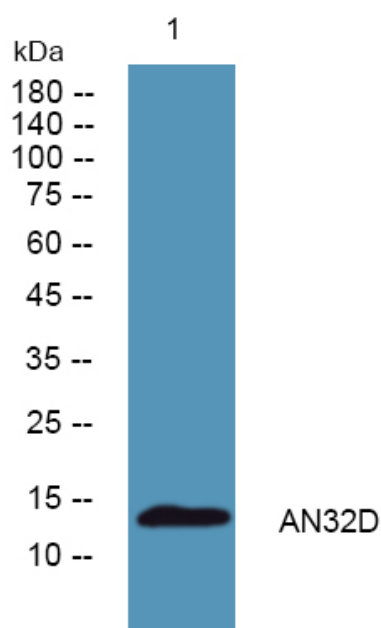


# AN32D Polyclonal Antibody

<b>Catalog No</b>	YP-Ab-04964
<b>Isotype</b>	IgG
<b>Reactivity</b>	Human;Rat;Mouse;
<b>Applications</b>	WB;ELISA
<b>Gene Name</b>	ANP32D PP32R2
<b>Protein Name</b>	Acidic leucine-rich nuclear phosphoprotein 32 family member D (Phosphoprotein 32-related protein 2) (Tumorigenic protein pp32r2)
<b>Immunogen</b>	Synthesized peptide derived from human protein . at AA range: 1-80
<b>Specificity</b>	AN32D Polyclonal Antibody detects endogenous levels of protein.
<b>Formulation</b>	Liquid in PBS containing 50% glycerol, and 0.02% sodium azide.
<b>Source</b>	Polyclonal, Rabbit,IgG
<b>Purification</b>	The antibody was affinity-purified from rabbit antiserum by affinity-chromatography using epitope-specific immunogen.
<b>Dilution</b>	WB 1:500-2000 ELISA 1:5000-20000
<b>Concentration</b>	1 mg/ml
<b>Purity</b>	≥90%
<b>Storage Stability</b>	-20°C/1 year
<b>Synonyms</b>	
<b>Observed Band</b>	14kD
<b>Cell Pathway</b>	nucleus,
<b>Tissue Specificity</b>	Placenta,
<b>Function</b>	similarity:Belongs to the ANP32 family.,similarity:Contains 3 LRR (leucine-rich) repeats.,
<b>Background</b>	Phosphoprotein 32 (PP32) is a tumor suppressor that can inhibit several types of cancers, including prostate and breast cancers. The protein encoded by this gene is one of at least two proteins that are similar in amino acid sequence to PP32 and are part of the same acidic nuclear phosphoprotein gene family. However, unlike PP32, the encoded protein is tumorigenic. The tumor suppressor function of PP32 has been localized to a 25 amino acid region that is absent in the protein encoded by this gene. This gene does not contain introns. [provided by RefSeq, Jul 2008],
<b>matters needing attention</b>	Avoid repeated freezing and thawing!

**Usage suggestions**

This product can be used in immunological reaction related experiments. For more information, please consult technical personnel.

**Products Images**

Western blot analysis of lysates from K562 cells,  
primary antibody was diluted at 1:1000, 4° over night