



# NDEL1 Polyclonal Antibody

<b>Catalog No</b>	YP-Ab-04935
<b>Isotype</b>	IgG
<b>Reactivity</b>	Human;Mouse;Rat
<b>Applications</b>	WB;ELISA
<b>Gene Name</b>	NDEL1 EOPA MITAP1 NUDEL
<b>Protein Name</b>	Nuclear distribution protein nudE-like 1 (Protein Nudel) (Mitosis-associated protein 1)
<b>Immunogen</b>	Synthesized peptide derived from human protein . at AA range: 160-240
<b>Specificity</b>	NDEL1 Polyclonal Antibody detects endogenous levels of protein.
<b>Formulation</b>	Liquid in PBS containing 50% glycerol, and 0.02% sodium azide.
<b>Source</b>	Polyclonal, Rabbit,IgG
<b>Purification</b>	The antibody was affinity-purified from rabbit antiserum by affinity-chromatography using epitope-specific immunogen.
<b>Dilution</b>	WB 1:500-2000 ELISA 1:5000-20000
<b>Concentration</b>	1 mg/ml
<b>Purity</b>	≥90%
<b>Storage Stability</b>	-20°C/1 year
<b>Synonyms</b>	
<b>Observed Band</b>	37kD
<b>Cell Pathway</b>	Cytoplasm, cytoskeleton. Cytoplasm, cytoskeleton, microtubule organizing center, centrosome. Chromosome, centromere, kinetochore. Cytoplasm, cytoskeleton, spindle. Localizes to the cell body of the motor neurons and colocalizes with assembled neurofilaments within axonal processes. Localizes to the microtubules of the manchette in elongated spermatids. Colocalizes with DISC1 in the perinuclear region, including the centrosome (By similarity). Localizes to the interphase centrosome and the mitotic spindle. Localizes to the kinetochore in a CENPF-dependent manner. .
<b>Tissue Specificity</b>	Expressed in brain, heart, kidney, liver, lung, pancreas, placenta and skeletal muscle.
<b>Function</b>	caution:The sequence shown here is derived from an Ensembl automatic analysis pipeline and should be considered as preliminary data.,caution:Was originally (PubMed:15728732) thought to function as an oligopeptidase (NUDEL-oligopeptidase or endooligopeptidase A) which could regulate peptide levels relevant to brain function.,developmental stage:Expression peaks in mitosis.,function:Facilitates the polymerization of neurofilaments from the individual subunits NEFH and NEFL (By similarity). Required for organization of the cellular microtubule array and microtubule anchoring at the centrosome. May regulate microtubule organization at least in part by targeting the microtubule



severing protein KATNA1 to the centrosome. Also positively regulates the activity of the minus-end directed microtubule motor protein dynein. May enhance dynein-mediated microtubule sliding by targeting dynein to the m

#### Background

This gene encodes a coiled-coil protein that plays a role in multiple processes including cytoskeletal organization, cell signaling and neuron migration, outgrowth and maintenance. Alternatively spliced transcript variants encoding multiple isoforms have been observed for this gene, and a pseudogene of this gene is located on the long arm of chromosome X. [provided by RefSeq, Mar 2012],

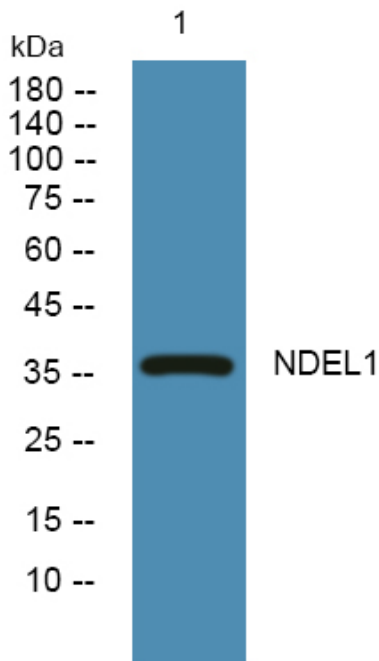
#### matters needing attention

Avoid repeated freezing and thawing!

#### Usage suggestions

This product can be used in immunological reaction related experiments. For more information, please consult technical personnel.

### Products Images



Western blot analysis of lysates from SW480 cells, primary antibody was diluted at 1:1000, 4° over night