



KIZ Polyclonal Antibody

Catalog No	YP-Ab-04913
Isotype	IgG
Reactivity	Human;Rat;Mouse;
Applications	WB;ELISA
Gene Name	PLK1S1 C20orf19 KIZ NCRNA00153 HT013
Protein Name	Centrosomal protein kizuna (Polo-like kinase 1 substrate 1)
Immunogen	Synthesized peptide derived from human protein . at AA range: 320-400
Specificity	KIZ Polyclonal Antibody detects endogenous levels of protein.
Formulation	Liquid in PBS containing 50% glycerol, and 0.02% sodium azide.
Source	Polyclonal, Rabbit,IgG
Purification	The antibody was affinity-purified from rabbit antiserum by affinity-chromatography using epitope-specific immunogen.
Dilution	WB 1:500-2000 ELISA 1:5000-20000
Concentration	1 mg/ml
Purity	≥90%
Storage Stability	-20°C/1 year
Synonyms	
Observed Band	74kD
Cell Pathway	Cytoplasm, cytoskeleton, microtubule organizing center, centrosome . Cytoplasm, cytoskeleton, cilium basal body . Localizes to centrosomes throughout the cell cycle. After centrosome duplication, it usually remains associated only with the mother centrosome, containing the older mature centriole and particles surrounding it. During prophase, additional particles accumulate around both separating centrosomes. Does not accumulate at the microtubule minus ends, but instead localizes to the centrosomes and centrosome-surrounding area in a microtubule-independent and dependent manner, respectively. .
Tissue Specificity	Uterus,
Function	microtubule cytoskeleton organization, cytoskeleton organization, microtubule-based process, cell cycle, cell cycle process, microtubule organizing center organization, spindle pole body organization,
Background	kizuna centrosomal protein(KIZ) Homo sapiens The protein encoded by this gene localizes to centrosomes, strengthening and stabilizing the pericentriolar region prior to spindle formation. The encoded protein usually remains with the mother centrosome after centrosomal duplication. Several transcript variants encoding different isoforms have been found for this gene. [provided by RefSeq,



Feb 2013],

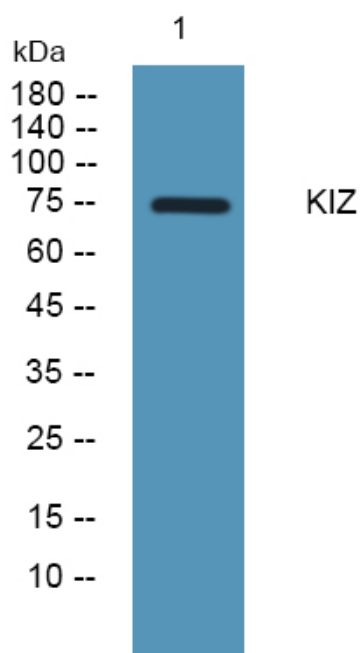
matters needing attention

Avoid repeated freezing and thawing!

Usage suggestions

This product can be used in immunological reaction related experiments. For more information, please consult technical personnel.

Products Images



Western blot analysis of lysates from KB cells, primary antibody was diluted at 1:1000, 4° over night