



CUX1 Polyclonal Antibody

Catalog No	YP-Ab-04911
Isotype	IgG
Reactivity	Human;Mouse;Rat
Applications	WB;ELISA
Gene Name	CUX1 CUTL1
Protein Name	Homeobox protein cut-like 1 (CCAAT displacement protein) (CDP) (Homeobox protein cux-1)
Immunogen	Synthesized peptide derived from human protein . at AA range: 1150-1230
Specificity	CUX1 Polyclonal Antibody detects endogenous levels of protein.
Formulation	Liquid in PBS containing 50% glycerol, and 0.02% sodium azide.
Source	Polyclonal, Rabbit,IgG
Purification	The antibody was affinity-purified from rabbit antiserum by affinity-chromatography using epitope-specific immunogen.
Dilution	WB 1:500-2000 ELISA 1:5000-20000
Concentration	1 mg/ml
Purity	≥90%
Storage Stability	-20°C/1 year
Synonyms	
Observed Band	165kD
Cell Pathway	Nucleus .
Tissue Specificity	Colon,Duodenum,Liver,Umbilical vein,
Function	alternative products:Additional isoforms seem to exist,function:May be involved in intra-Golgi retrograde transport.,function:Probably has a broad role in mammalian development as a repressor of developmentally regulated gene expression. May act by preventing binding of positively-activating CCAAT factors to promoters. Component of nf-munr repressor; binds to the matrix attachment regions (MARs) (5' and 3') of the immunoglobulin heavy chain enhancer. Represses T-cell receptor (TCR) beta enhancer function by binding to MARbeta, an ATC-rich DNA sequence located upstream of the TCR beta enhancer.,miscellaneous:Asn-1290 may participate in regulating DNA-binding activity by promoting homo- and heterodimerization.,PTM:Phosphorylated upon DNA damage, probably by ATM or ATR.,similarity:Belongs to the CASP family.,similarity:Belongs to the CUT homeobox family.,similarity:Contains 1 homeobox DNA-bin
Background	The protein encoded by this gene is a member of the homeodomain family of DNA binding proteins. It may regulate gene expression, morphogenesis, and differentiation and it may also play a role in the cell cycle progression. Several



alternatively spliced transcript variants encoding different isoforms have been identified.[provided by RefSeq, Feb 2011],

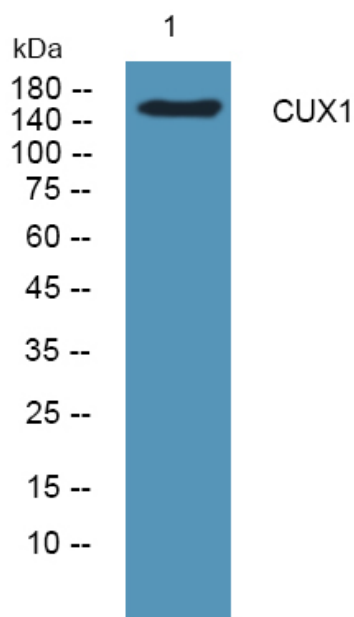
matters needing attention

Avoid repeated freezing and thawing!

Usage suggestions

This product can be used in immunological reaction related experiments. For more information, please consult technical personnel.

Products Images



Western blot analysis of lysates from A431 cells, primary antibody was diluted at 1:1000, 4° over night