

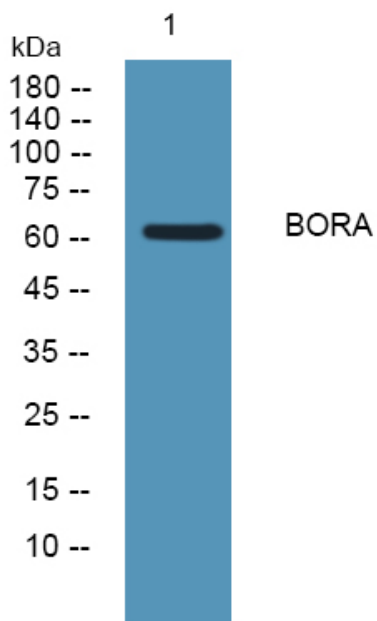


# BORA Polyclonal Antibody

<b>Catalog No</b>	YP-Ab-04907
<b>Isotype</b>	IgG
<b>Reactivity</b>	Human;Rat
<b>Applications</b>	WB;ELISA
<b>Gene Name</b>	BORA C13orf34
<b>Protein Name</b>	Protein aurora borealis (HsBora)
<b>Immunogen</b>	Synthesized peptide derived from human protein . at AA range: 440-520
<b>Specificity</b>	BORA Polyclonal Antibody detects endogenous levels of protein.
<b>Formulation</b>	Liquid in PBS containing 50% glycerol, and 0.02% sodium azide.
<b>Source</b>	Polyclonal, Rabbit,IgG
<b>Purification</b>	The antibody was affinity-purified from rabbit antiserum by affinity-chromatography using epitope-specific immunogen.
<b>Dilution</b>	WB 1:500-2000 ELISA 1:5000-20000
<b>Concentration</b>	1 mg/ml
<b>Purity</b>	≥90%
<b>Storage Stability</b>	-20°C/1 year
<b>Synonyms</b>	
<b>Observed Band</b>	61kD
<b>Cell Pathway</b>	cytosol,meiotic spindle,
<b>Tissue Specificity</b>	Bone marrow,Leiomyosarcoma,Rhabdomyosarcoma,Small intestine,Testis carcinom
<b>Function</b>	function:Required for the activation of Aurora-A (AURKA/STK6) at the onset of mitosis.,PTM:Phosphorylated by AURKA/STK6.,similarity:Belongs to the BORA family.,subunit:Interacts with AURKA/STK6.,
<b>Background</b>	BORA is an activator of the protein kinase Aurora A (AURKA; MIM 603072), which is required for centrosome maturation, spindle assembly, and asymmetric protein localization during mitosis (Hutterer et al., 2006 [PubMed 16890155]).[supplied by OMIM, Mar 2008],
<b>matters needing attention</b>	Avoid repeated freezing and thawing!
<b>Usage suggestions</b>	This product can be used in immunological reaction related experiments. For more information, please consult technical personnel.



## Products Images



Western blot analysis of lysates from A431 cells,  
primary antibody was diluted at 1:1000, 4° over night