



# HIPK1 Polyclonal Antibody

<b>Catalog No</b>	YP-Ab-04893
<b>Isotype</b>	IgG
<b>Reactivity</b>	Human;Mouse;Rat
<b>Applications</b>	WB;ELISA
<b>Gene Name</b>	HIPK1 KIAA0630 MYAK NBAK2
<b>Protein Name</b>	Homeodomain-interacting protein kinase 1 (EC 2.7.11.1) (Nuclear body-associated kinase 2)
<b>Immunogen</b>	Synthesized peptide derived from human protein . at AA range: 290-370
<b>Specificity</b>	HIPK1 Polyclonal Antibody detects endogenous levels of protein.
<b>Formulation</b>	Liquid in PBS containing 50% glycerol, and 0.02% sodium azide.
<b>Source</b>	Polyclonal, Rabbit,IgG
<b>Purification</b>	The antibody was affinity-purified from rabbit antiserum by affinity-chromatography using epitope-specific immunogen.
<b>Dilution</b>	WB 1:500-2000 ELISA 1:5000-20000
<b>Concentration</b>	1 mg/ml
<b>Purity</b>	≥90%
<b>Storage Stability</b>	-20°C/1 year
<b>Synonyms</b>	
<b>Observed Band</b>	133kD
<b>Cell Pathway</b>	Nucleus . Cytoplasm . Nucleus speckle . Predominantly nuclear. Translocates from nucleus to cytoplasm in response to stress stimuli via SENP1-mediated desumoylation. .
<b>Tissue Specificity</b>	Ubiquitously expressed with highest levels in skeletal muscle and heart. Overexpressed in breast cancer cell lines. Isoform 2 is highly expressed in testis. Expressed in both androgen-dependent and androgen-independent prostate cancer cells (PubMed:28289210).
<b>Function</b>	catalytic activity:ATP + a protein = ADP + a phosphoprotein.,function:May play a role as a corepressor for homeodomain transcription factors. Phosphorylates DAXX in response to stress, and mediates its translocation from the nucleus to the cytoplasm. May be involved in malignant squamous cell tumor formation.,PTM:Autophosphorylated. Phosphorylated and activated by JNK1.,similarity:Belongs to the protein kinase superfamily.,similarity:Belongs to the protein kinase superfamily. CMGC Ser/Thr protein kinase family. HIPK subfamily.,similarity:Contains 1 protein kinase domain.,subcellular location:Predominantly nuclear.,subunit:Interacts with Nkx1-2 and Nkx2-5 (By similarity). Interacts with DAXX and TP53.,tissue specificity:Ubiquitously expressed with highest levels in skeletal muscle and heart. Overexpressed in breast cancer cell lines.,



## Background

homeodomain interacting protein kinase 1(HIPK1) Homo sapiens The protein encoded by this gene belongs to the Ser/Thr family of protein kinases and HIPK subfamily. It phosphorylates homeodomain transcription factors and may also function as a co-repressor for homeodomain transcription factors. Alternative splicing results in four transcript variants encoding four distinct isoforms. [provided by RefSeq, Jul 2008],

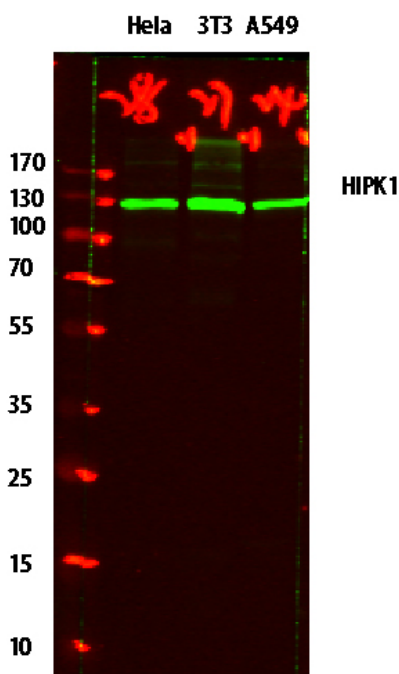
## matters needing attention

Avoid repeated freezing and thawing!

## Usage suggestions

This product can be used in immunological reaction related experiments. For more information, please consult technical personnel.

## Products Images



Western blot analysis of various lysates, primary antibody was diluted at 1:1000, 4° over night, secondary antibody(cat: RS23920)was diluted at 1:10000, 37° 1hour.