

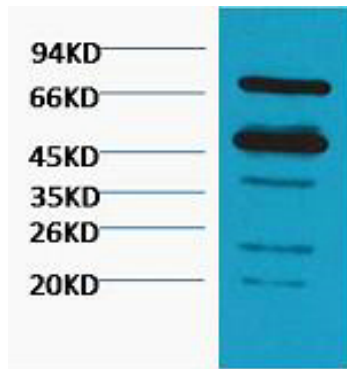


# Rubisco Polyclonal Antibody

<b>Catalog No</b>	YP-Ab-04772
<b>Isotype</b>	IgG
<b>Reactivity</b>	VariousPlants
<b>Applications</b>	WB
<b>Gene Name</b>	
<b>Protein Name</b>	
<b>Immunogen</b>	Purified Protein
<b>Specificity</b>	The antibody detects endogenous Rubisco Large Chain protein.
<b>Formulation</b>	PBS, pH 7.4, containing 0.5%BSA, 0.02% sodium azide as Preservative and 50% Glycerol.
<b>Source</b>	Polyclonal, Mouse
<b>Purification</b>	The antibody was affinity-purified from mouse antiserum by affinity-chromatography using specific immunogen.
<b>Dilution</b>	WB: 1:3000-5000
<b>Concentration</b>	1 mg/ml
<b>Purity</b>	≥90%
<b>Storage Stability</b>	-20°C/1 year
<b>Synonyms</b>	
<b>Observed Band</b>	
<b>Cell Pathway</b>	
<b>Tissue Specificity</b>	
<b>Function</b>	
<b>Background</b>	RuBisCO catalyzes two reactions: the carboxylation of D-ribulose 1,5-bisphosphate, the primary event in carbon dioxide fixation, as well as the oxidative fragmentation of the pentose substrate in the photorespiration process. Both reactions occur simultaneously and in competition at the same active site.
<b>matters needing attention</b>	Avoid repeated freezing and thawing!
<b>Usage suggestions</b>	This product can be used in immunological reaction related experiments. For more information, please consult technical personnel.



## Products Images



Western blot analysis of Arabidopsis thaliana, diluted at 1:5000. Secondary antibody(catalog#:RS0002) was diluted at 1:20000