

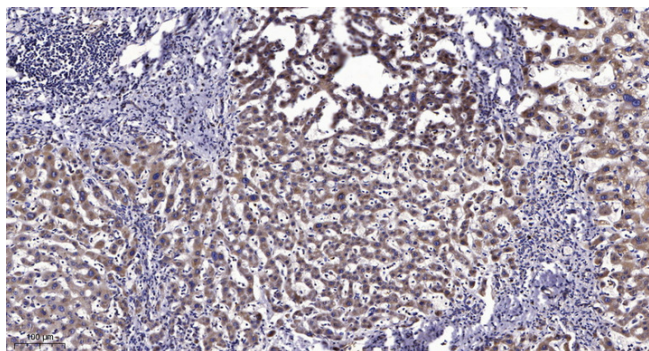


MCFD2 (Cleaved-Glu27) rabbit pAb

Catalog No	YP-Ab-04395
Isotype	IgG
Reactivity	Human;Mouse;Rat
Applications	WB;IHC
Gene Name	MCFD2 SDNSF
Protein Name	MCFD2 (Cleaved-Glu27)
Immunogen	Synthesized peptide derived from human MCFD2 (Cleaved-Glu27)
Specificity	This antibody detects endogenous levels of Human,Mouse,Rat MCFD2 (Cleaved-Glu27, protein was cleaved amino acid sequence between 26-27)
Formulation	Liquid in PBS containing 50% glycerol, 0.5% BSA and 0.02% sodium azide.
Source	Polyclonal, Rabbit,IgG
Purification	The antibody was affinity-purified from rabbit serum by affinity-chromatography using specific immunogen.
Dilution	WB 1:500-2000;IHC-p 1:50-300
Concentration	1 mg/ml
Purity	≥90%
Storage Stability	-20°C/1 year
Synonyms	Multiple coagulation factor deficiency protein 2 (Neural stem cell-derived neuronal survival protein)
Observed Band	14 16kD
Cell Pathway	Endoplasmic reticulum-Golgi intermediate compartment . Endoplasmic reticulum . Golgi apparatus .
Tissue Specificity	
Function	
Background	
matters needing attention	Avoid repeated freezing and thawing!
Usage suggestions	This product can be used in immunological reaction related experiments. For more information, please consult technical personnel.



Products Images



Immunohistochemical analysis of paraffin-embedded human liver cancer. 1, Antibody was diluted at 1:200(4° overnight). 2, Tris-EDTA,pH9.0 was used for antigen retrieval. 3,Secondary antibody was diluted at 1:200(room temperature, 45min).