

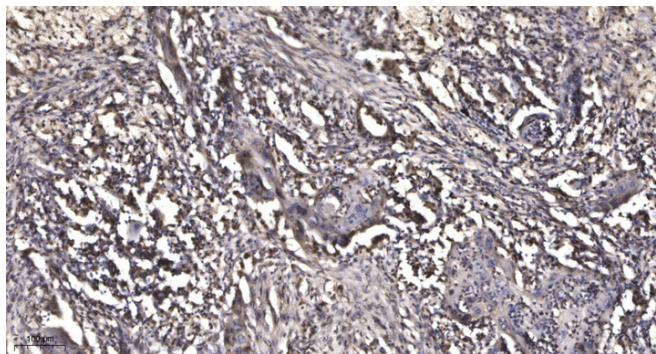


MMP28 (Cleaved-Phe123) rabbit pAb

Catalog No	YP-Ab-04394
Isotype	IgG
Reactivity	Human;Rat;Mouse;
Applications	WB;IHC
Gene Name	MMP28 MMP25 UNQ1893/PRO4339
Protein Name	MMP28 (Cleaved-Phe123)
Immunogen	Synthesized peptide derived from human MMP28 (Cleaved-Phe123)
Specificity	This antibody detects endogenous levels of Human MMP28 (Cleaved-Phe123, protein was cleaved amino acid sequence between 123-124)
Formulation	Liquid in PBS containing 50% glycerol, 0.5% BSA and 0.02% sodium azide.
Source	Polyclonal, Rabbit,IgG
Purification	The antibody was affinity-purified from rabbit serum by affinity-chromatography using specific immunogen.
Dilution	WB 1:500-2000;IHC-p 1:50-300
Concentration	1 mg/ml
Purity	≥90%
Storage Stability	-20°C/1 year
Synonyms	Matrix metalloproteinase-28 (MMP-28;EC 3.4.24.-;Epilysin)
Observed Band	44 57kD
Cell Pathway	Secreted, extracellular space, extracellular matrix.
Tissue Specificity	Expressed at high levels in testes and lung. Low levels are detected in kidney, pancreas and skin. Also expressed in fetal lung, brain, skeletal muscle and kidney. Expressed selectively in keratinocytes. Widely expressed in several carcinomas as well. Is up-regulated in response to injury in the skin.
Function	
Background	
matters needing attention	Avoid repeated freezing and thawing!
Usage suggestions	This product can be used in immunological reaction related experiments. For more information, please consult technical personnel.



Products Images



Immunohistochemical analysis of paraffin-embedded human Squamous cell carcinoma of lung. 1, Antibody was diluted at 1:200(4° overnight). 2, Tris-EDTA,pH9.0 was used for antigen retrieval. 3,Secondary antibody was diluted at 1:200(room temperature, 45min).