

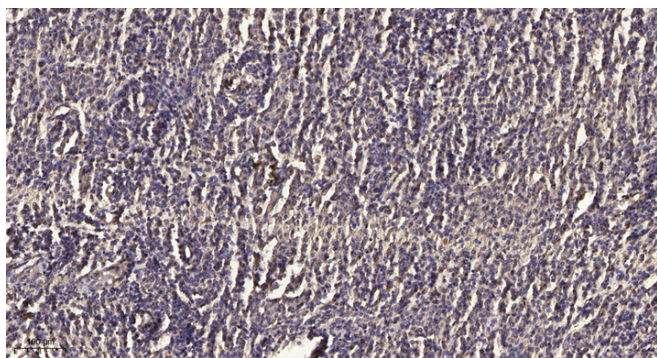


# Kallikrein-7 (Cleaved-Ile30) rabbit pAb

<b>Catalog No</b>	YP-Ab-04390
<b>Isotype</b>	IgG
<b>Reactivity</b>	Human;Mouse;Rat
<b>Applications</b>	WB;IHC
<b>Gene Name</b>	KLK7 PRSS6 SCCE
<b>Protein Name</b>	Kallikrein-7 (Cleaved-Ile30)
<b>Immunogen</b>	Synthesized peptide derived from human Kallikrein-7 (Cleaved-Ile30)
<b>Specificity</b>	This antibody detects endogenous levels of Human,Mouse,Rat Kallikrein-7 (Cleaved-Ile30, protein was cleaved amino acid sequence between 29-30 )
<b>Formulation</b>	Liquid in PBS containing 50% glycerol, 0.5% BSA and 0.02% sodium azide.
<b>Source</b>	Polyclonal, Rabbit,IgG
<b>Purification</b>	The antibody was affinity-purified from rabbit serum by affinity-chromatography using specific immunogen.
<b>Dilution</b>	WB 1:500-2000;IHC-p 1:50-300
<b>Concentration</b>	1 mg/ml
<b>Purity</b>	≥90%
<b>Storage Stability</b>	-20°C/1 year
<b>Synonyms</b>	Kallikrein-7 (hK7;EC 3.4.21.117;Serine protease 6;Stratum corneum chymotryptic enzyme;hSCCE)
<b>Observed Band</b>	25kD
<b>Cell Pathway</b>	Secreted . In ovarian carcinoma, secreted and also observed at the apical membrane and in cytoplasm at the invasive front.
<b>Tissue Specificity</b>	Abundantly expressed in the skin and is expressed by keratinocytes in the epidermis. Also expressed in the brain, mammary gland, cerebellum, spinal cord and kidney. Lower levels in salivary glands, uterus, thymus, thyroid, placenta, trachea and testis. Up-regulated in ovarian carcinoma, especially late-stage serous carcinoma, compared with normal ovaries and benign adenomas (at protein level).
<b>Function</b>	
<b>Background</b>	
<b>matters needing attention</b>	Avoid repeated freezing and thawing!

**Usage suggestions**

This product can be used in immunological reaction related experiments. For more information, please consult technical personnel.

**Products Images**

Immunohistochemical analysis of paraffin-embedded human meningioma. 1, Antibody was diluted at 1:200(4 ° overnight). 2, Tris-EDTA,pH9.0 was used for antigen retrieval. 3,Secondary antibody was diluted at 1:200(room temperature, 45min).