



# Kallikrein-6 (Cleaved-Leu22) rabbit pAb

<b>Catalog No</b>	YP-Ab-04389
<b>Isotype</b>	IgG
<b>Reactivity</b>	Human;Rat;Mouse;
<b>Applications</b>	WB; ELISA;IHC
<b>Gene Name</b>	KLK6 PRSS18 PRSS9
<b>Protein Name</b>	Kallikrein-6 (Cleaved-Leu22)
<b>Immunogen</b>	Synthesized peptide derived from human Kallikrein-6 (Cleaved-Leu22)
<b>Specificity</b>	This antibody detects endogenous levels of Human Kallikrein-6 (Cleaved-Leu22, protein was cleaved amino acid sequence between 21-22 )
<b>Formulation</b>	Liquid in PBS containing 50% glycerol, 0.5% BSA and 0.02% sodium azide.
<b>Source</b>	Polyclonal, Rabbit,IgG
<b>Purification</b>	The antibody was affinity-purified from rabbit serum by affinity-chromatography using specific immunogen.
<b>Dilution</b>	WB 1:500-2000;IHC-p 1:50-300; ELISA 2000-20000
<b>Concentration</b>	1 mg/ml
<b>Purity</b>	≥90%
<b>Storage Stability</b>	-20°C/1 year
<b>Synonyms</b>	Kallikrein-6 (EC 3.4.21.-;Neurosin;Protease M;SP59;Serine protease 18;Serine protease 9;Zyme)
<b>Observed Band</b>	25kD
<b>Cell Pathway</b>	Secreted. Nucleus, nucleolus. Cytoplasm. Mitochondrion. Microsome. In brain, detected in the nucleus of glial cells and in the nucleus and cytoplasm of neurons. Detected in the mitochondrial and microsomal fractions of HEK-293 cells and released into the cytoplasm following cell stress.
<b>Tissue Specificity</b>	In fluids, highest levels found in milk of lactating women followed by cerebrospinal fluid, nipple aspirate fluid and breast cyst fluid. Also found in serum, seminal plasma and some amniotic fluids and breast tumor cytosolic extracts. Not detected in urine. At the tissue level, highest concentrations found in glandular tissues such as salivary glands followed by lung, colon, fallopian tube, placenta, breast, pituitary and kidney. Not detected in skin, spleen, bone, thyroid, heart, ureter, liver, muscle, endometrium, testis, pancreas, seminal vesicle, ovary, adrenals and prostate. In brain, detected in gray matter neurons (at protein level). Colocalizes with pathological inclusions such as Lewy bodies and glial cytoplasmic inclusions. Overexpressed in primary breast tumors but not expressed
<b>Function</b>	

## Background

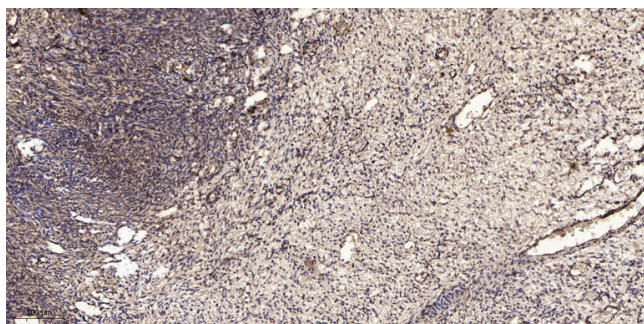
### matters needing attention

Avoid repeated freezing and thawing!

### Usage suggestions

This product can be used in immunological reaction related experiments. For more information, please consult technical personnel.

## Products Images



Immunohistochemical analysis of paraffin-embedded human oophoroma. 1, Antibody was diluted at 1:200(4° overnight). 2, Tris-EDTA,pH9.0 was used for antigen retrieval. 3,Secondary antibody was diluted at 1:200(room temperature, 45min).