



# Haptoglobin Polyclonal Antibody

<b>Catalog No</b>	YP-Ab-04357
<b>Isotype</b>	IgG
<b>Reactivity</b>	Human;Rat;Mouse;
<b>Applications</b>	IHC;IF;ELISA
<b>Gene Name</b>	HP
<b>Protein Name</b>	Haptoglobin (Zonulin) [Cleaved into: Haptoglobin alpha chain; Haptoglobin beta chain]
<b>Immunogen</b>	Synthetic peptide from human protein at AA range: 300-360
<b>Specificity</b>	The antibody detects endogenous Haptoglobin
<b>Formulation</b>	Liquid in PBS containing 50% glycerol, 0.5% BSA and 0.02% sodium azide.
<b>Source</b>	Polyclonal, Rabbit,IgG
<b>Purification</b>	The antibody was affinity-purified from rabbit antiserum by affinity-chromatography using epitope-specific immunogen.
<b>Dilution</b>	IHC-p 1:50-200, ELISA 1:10000-20000. IF 1:50-200
<b>Concentration</b>	1 mg/ml
<b>Purity</b>	≥90%
<b>Storage Stability</b>	-20°C/1 year
<b>Synonyms</b>	Haptoglobin (Zonulin) [Cleaved into: Haptoglobin alpha chain; Haptoglobin beta chain]
<b>Observed Band</b>	
<b>Cell Pathway</b>	Secreted.
<b>Tissue Specificity</b>	Expressed by the liver and secreted in plasma.
<b>Function</b>	caution:Although homologous to serine proteases, it has lost all essential catalytic residues and has no enzymatic activity.,function:Haptoglobin combines with free plasma hemoglobin, preventing loss of iron through the kidneys and protecting the kidneys from damage by hemoglobin, while making the hemoglobin accessible to degradative enzymes.,online information:Haptoglobin entry,online information:The Singapore human mutation and polymorphism database,polymorphism:In the human populations there are two major allelic forms, alpha-1 with 83 residues and alpha-2 with 142 residues. These alleles determine the 3 major phenotypes HP*1F/HP*1S and HP*2FS. The two main alleles of HP*1 are called HP*1F (fast) and HP*1S (slow).,similarity:Belongs to the peptidase S1 family.,similarity:Contains 1 peptidase S1 domain.,similarity:Contains 1 Sushi (CCP/SCR) domain.,similarity:Contains 2 Sushi (CCP/SCR)

**Background**

haptoglobin(HP) Homo sapiens This gene encodes a preproprotein, which is processed to yield both alpha and beta chains, which subsequently combine as a tetramer to produce haptoglobin. Haptoglobin functions to bind free plasma hemoglobin, which allows degradative enzymes to gain access to the hemoglobin, while at the same time preventing loss of iron through the kidneys and protecting the kidneys from damage by hemoglobin. Mutations in this gene and/or its regulatory regions cause ahaptoglobinemia or hypohaptoglobinemia. This gene has also been linked to diabetic nephropathy, the incidence of coronary artery disease in type 1 diabetes, Crohn's disease, inflammatory disease behavior, primary sclerosing cholangitis, susceptibility to idiopathic Parkinson's disease, and a reduced incidence of Plasmodium falciparum malaria. The protein encoded also exhibits antimicrobial activity against bacteria. A similar duplicated gene is located nex

**matters needing attention**

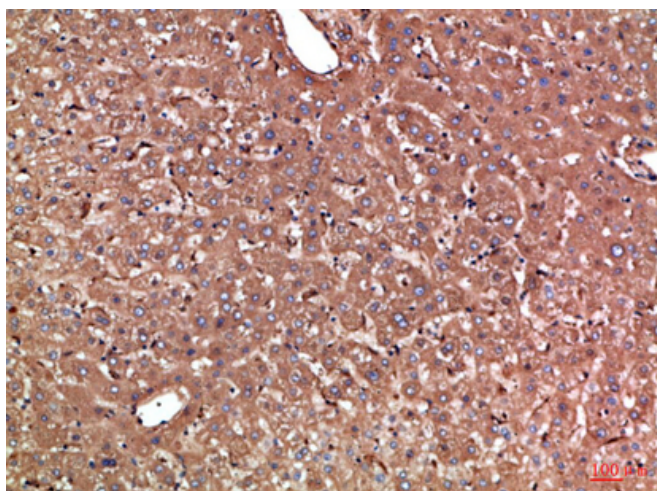
Avoid repeated freezing and thawing!

**Usage suggestions**

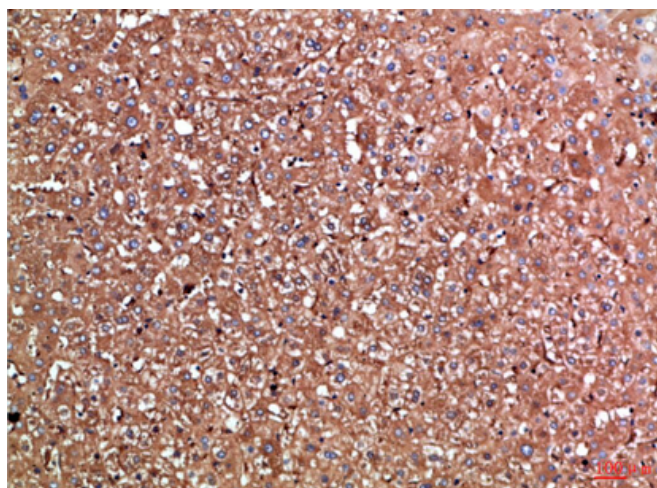
This product can be used in immunological reaction related experiments. For more information, please consult technical personnel.



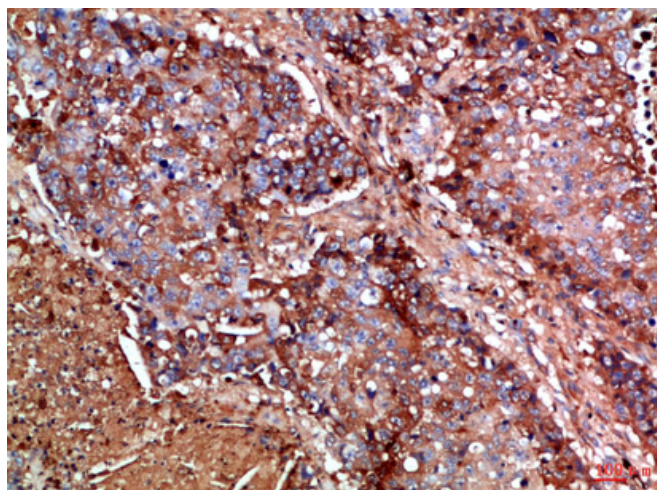
## Products Images



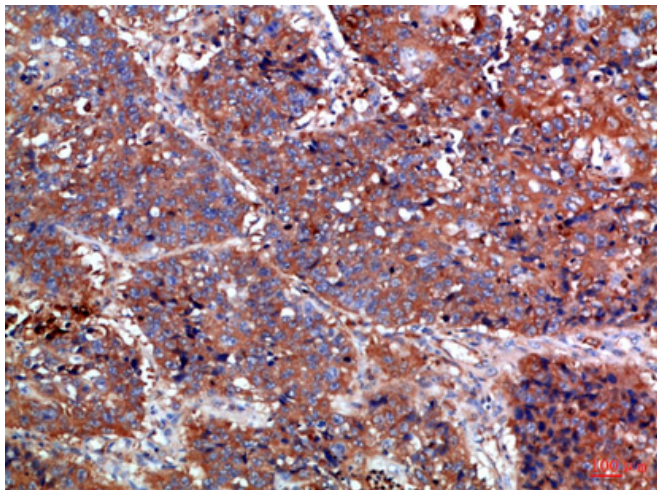
Immunohistochemical analysis of paraffin-embedded Human-liver, antibody was diluted at 1:100



Immunohistochemical analysis of paraffin-embedded Human-liver, antibody was diluted at 1:100



Immunohistochemical analysis of paraffin-embedded Human-lung-cancer, antibody was diluted at 1:100



Immunohistochemical analysis of paraffin-embedded Human-lung-cancer, antibody was diluted at 1:100