



MIA2 Polyclonal Antibody

Catalog No	YP-Ab-04350
Isotype	IgG
Reactivity	Human;Rat;Mouse;
Applications	WB;IHC
Gene Name	MIA2
Protein Name	MIA2
Immunogen	Synthesized peptide derived from MIA2 at AA range: 361-410
Specificity	MIA2 Polyclonal Antibody detects endogenous levels of MIA2
Formulation	Liquid in PBS containing 50% glycerol, 0.5% BSA and 0.02% sodium azide.
Source	Polyclonal, Rabbit,IgG
Purification	The antibody was affinity-purified from rabbit antiserum by affinity-chromatography using epitope-specific immunogen.
Dilution	WB 1:500-2000;IHC-p 1:50-300
Concentration	1 mg/ml
Purity	≥90%
Storage Stability	-20°C/1 year
Synonyms	Melanoma inhibitory activity protein 2
Observed Band	65kD
Cell Pathway	Endoplasmic reticulum membrane ; Single-pass membrane protein . Localizes to endoplasmic reticulum exit sites (ERES), also known as transitional endoplasmic reticulum (tER). .
Tissue Specificity	Highly expressed in liver and weakly in testis. Expression was higher in patients with severe fibrosis or inflammation and chronic hepatitis (PubMed:12586826). Isoform 1 is specifically expressed in lung, testis, small intestine, colon, pancreas, kidney, liver and prostate (PubMed:27138255). Isoform 8 is expressed only in testis (at the protein level). Isoform 8 (at protein level) and isoform 9 are expressed in cutaneous T-cell lymphoma (CTCL) cell lines, colorectal carcinomas, breast carcinomas and melanoma. Isoform 9, but not isoform 5A, is expressed in head and neck squamous cell carcinoma (PubMed:12839582).
Function	disease:Autoantigen found several cancer types, including benign meningioma and cutaneous T-cell lymphoma (CTCL). Isoform 5A and isoform 5B are recognized by patients' sera with tumor specimen of various origins.,disease:Tumor-associated antigen found in several cutaneous T-cell lymphoma (CTCL). Also found in colorectal and breast carcinomas, head and neck squamous cell carcinomas and melanoma.,function:Tumor-associated antigen.,sequence caution:Translation N-terminally extended.,similarity:Belongs to the cTAGE family.,tissue specificity:At the protein level, isoform 5A is



expressed only in testis. Other isoforms are expressed in several other normal tissues, including brain, muscle and cranial skin. Isoform 5A (at the protein level) and isoform 5B are expressed in cutaneous T-cell lymphoma (CTCL) cell lines, colorectal carcinomas, breast carcinomas and melanoma. Isoform 5B, but not isof

Background

This gene encodes s receptor in the endoplasmic reticulum, which plays a role in the export of large pre-chylomicrons and pre-very low density lipoproteins (pre-VLDLs). Three major classes of transcripts are generated from this gene- melanoma inhibitory activity 2-specific transcripts, cTAGE family member 5-specific transcripts and transcripts that include exons from both these transcript species (TANGO1-like or TALI). Additionally, alternative splicing in these transcripts results in multiple transcript variants encoding multiple isoforms. [provided by RefSeq, Sep 2016],

matters needing attention

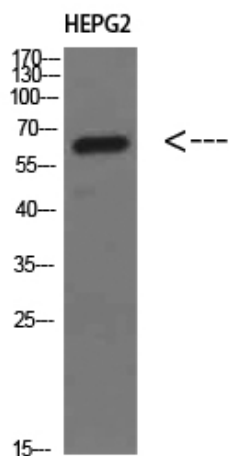
Avoid repeated freezing and thawing!

Usage suggestions

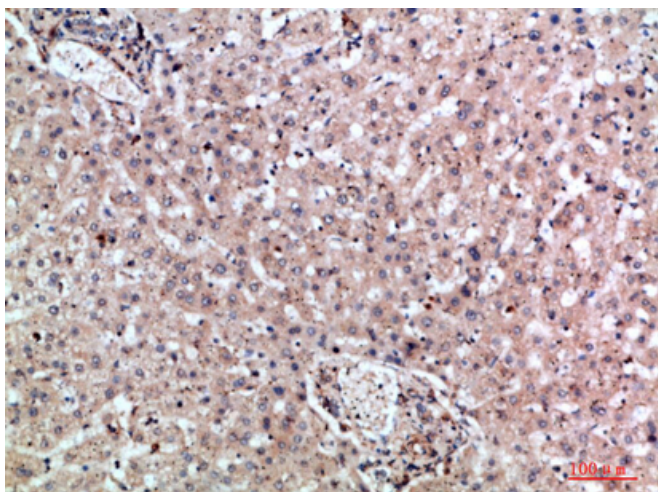
This product can be used in immunological reaction related experiments. For more information, please consult technical personnel.



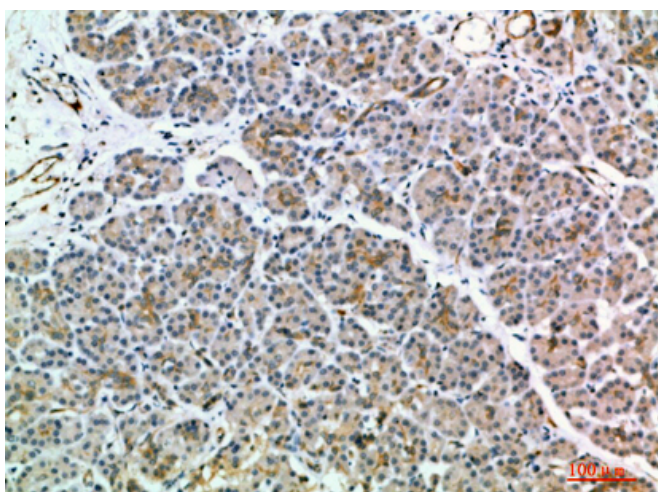
Products Images



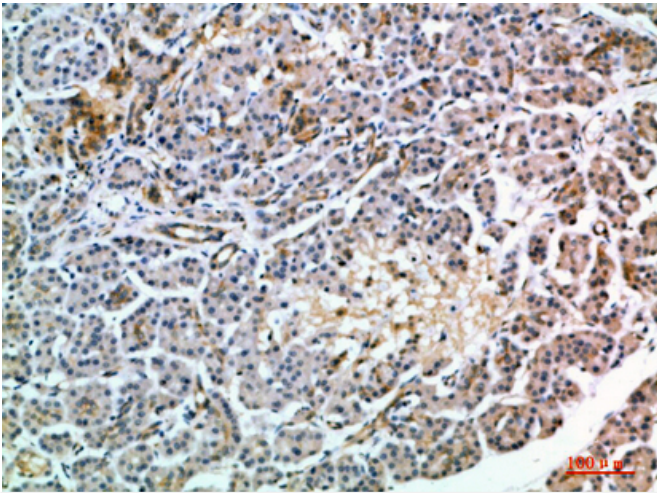
Western Blot analysis of HEPG2 cells using MIA2 Polyclonal Antibody diluted at 1:500. Secondary antibody(catalog#:RS0002) was diluted at 1:20000



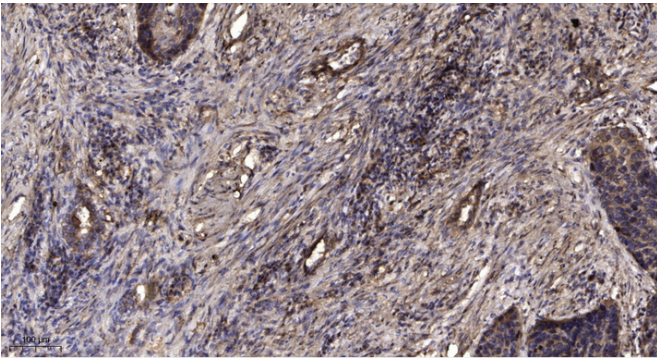
Immunohistochemical analysis of paraffin-embedded human-liver, antibody was diluted at 1:200



Immunohistochemical analysis of paraffin-embedded human-pancreas, antibody was diluted at 1:200



Immunohistochemical analysis of paraffin-embedded human-pancreas, antibody was diluted at 1:200



Immunohistochemical analysis of paraffin-embedded human Squamous cell carcinoma of lung. 1, Antibody was diluted at 1:200(4° overnight). 2, Tris-EDTA, pH9.0 was used for antigen retrieval. 3, Secondary antibody was diluted at 1:200(room temperature, 45min).