



SDHB Polyclonal Antibody

Catalog No	YP-Ab-04340
Isotype	IgG
Reactivity	Human;Mouse;Rat;Fish
Applications	WB;IHC;IF;ELISA
Gene Name	SDHB
Protein Name	Succinate dehydrogenase [ubiquinone] iron-sulfur subunit mitochondrial
Immunogen	The antiserum was produced against synthesized peptide derived from the Internal region of human SDHB. AA range:131-180
Specificity	SDHB Polyclonal Antibody detects endogenous levels of SDHB protein.
Formulation	Liquid in PBS containing 50% glycerol, 0.5% BSA and 0.02% sodium azide.
Source	Polyclonal, Rabbit,IgG
Purification	The antibody was affinity-purified from rabbit antiserum by affinity-chromatography using epitope-specific immunogen.
Dilution	WB: 1/500 - 1/2000. IHC-p: 1/100-1/300. ELISA: 1/20000.. IF 1:50-200
Concentration	1 mg/ml
Purity	≥90%
Storage Stability	-20°C/1 year
Synonyms	SDHB; SDH; SDH1; Succinate dehydrogenase [ubiquinone] iron-sulfur subunit, mitochondrial; Iron-sulfur subunit of complex II; Ip
Observed Band	31kD
Cell Pathway	Mitochondrion inner membrane; Peripheral membrane protein; Matrix side.
Tissue Specificity	Brain,Fibroblast,Liver,
Function	catalytic activity:Succinate + ubiquinone = fumarate + ubiquinol.,cofactor: Binds 1 2Fe-2S cluster.,cofactor: Binds 1 3Fe-4S cluster.,cofactor: Binds 1 4Fe-4S cluster.,disease: Defects in SDHB are a cause of Cowden-like syndrome [MIM:612359]. Cowden-like syndrome is a cancer predisposition syndrome associated with elevated risk for tumors of the breast, thyroid, kidney and uterus.,disease: Defects in SDHB are a cause of paraganglioma and gastric stromal sarcoma [MIM:606864]; also called Carney-Stratakis syndrome. Gastrointestinal stromal tumors may be sporadic or inherited in an autosomal dominant manner, alone or as a component of a syndrome associated with other tumors, such as in the context of neurofibromatosis type 1 (NF1). Patients have both gastrointestinal stromal tumors and paragangliomas. Susceptibility to the tumors was inherited in an apparently autosomal dominant manner, with inc

**Background**

Complex II of the respiratory chain, which is specifically involved in the oxidation of succinate, carries electrons from FADH to CoQ. The complex is composed of four nuclear-encoded subunits and is localized in the mitochondrial inner membrane. The iron-sulfur subunit is highly conserved and contains three cysteine-rich clusters which may comprise the iron-sulfur centers of the enzyme. Sporadic and familial mutations in this gene result in paragangliomas and pheochromocytoma, and support a link between mitochondrial dysfunction and tumorigenesis. [provided by RefSeq, Jul 2008],

matters needing attention

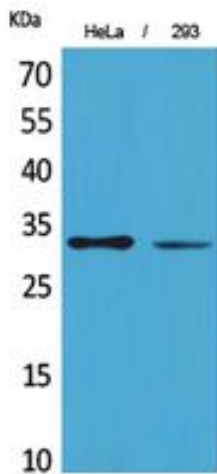
Avoid repeated freezing and thawing!

Usage suggestions

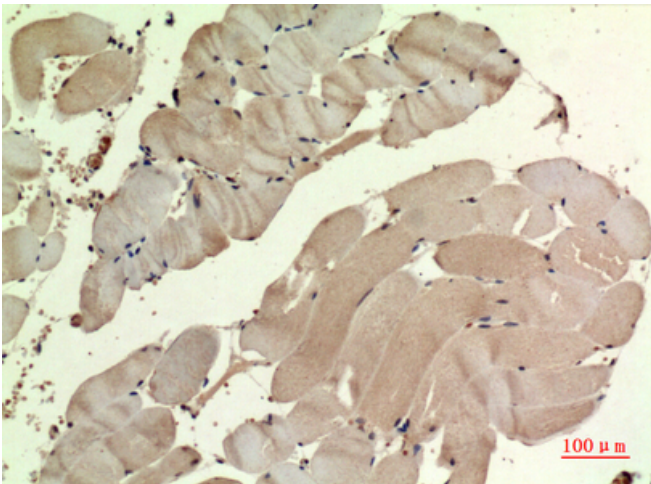
This product can be used in immunological reaction related experiments. For more information, please consult technical personnel.



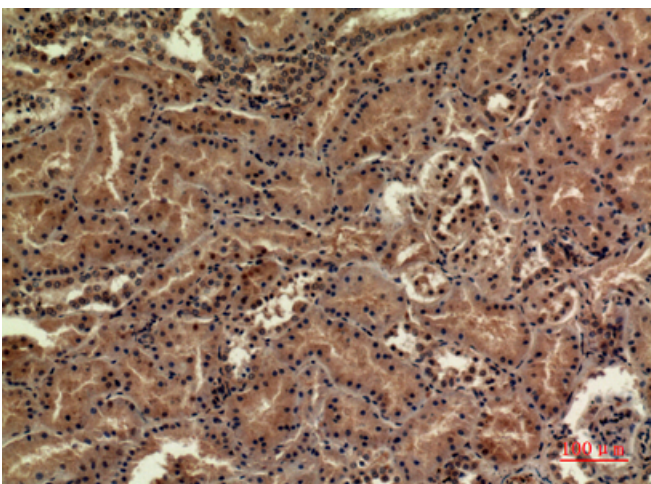
Products Images



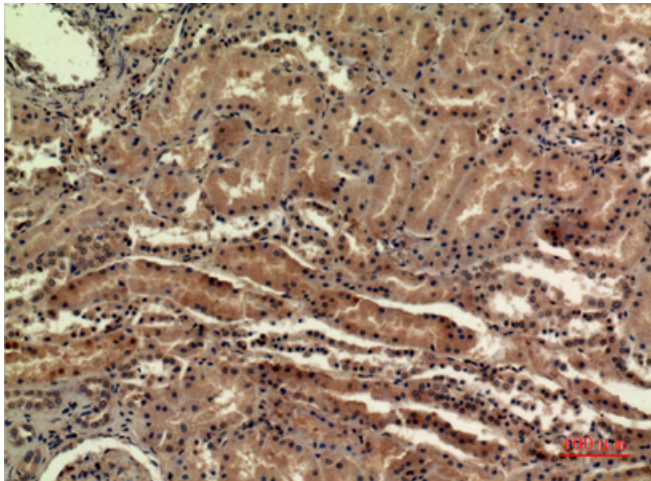
Western Blot analysis of HeLa, 293 cells using SDHB Polyclonal Antibody. Secondary antibody(catalog#:RS0002) was diluted at 1:20000



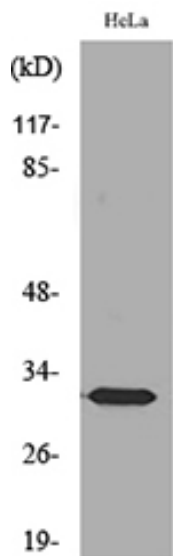
Immunohistochemical analysis of paraffin-embedded human-muscle, antibody was diluted at 1:100



Immunohistochemical analysis of paraffin-embedded human-kidney, antibody was diluted at 1:100



Immunohistochemical analysis of paraffin-embedded human-kidney, antibody was diluted at 1:100



Western blot analysis of lysate from HeLa cells, using SDHB Antibody.