



DCI Polyclonal Antibody

Catalog No	YP-Ab-04321
Isotype	IgG
Reactivity	Human;Rat;Mouse;
Applications	WB;IHC;IF;ELISA
Gene Name	ECI1
Protein Name	Enoyl-CoA delta isomerase 1 mitochondrial
Immunogen	Synthesized peptide derived from DCI . at AA range: c-terminal
Specificity	DCI Polyclonal Antibody detects endogenous levels of DCI protein.
Formulation	Liquid in PBS containing 50% glycerol, 0.5% BSA and 0.02% sodium azide.
Source	Polyclonal, Rabbit,IgG
Purification	The antibody was affinity-purified from rabbit antiserum by affinity-chromatography using epitope-specific immunogen.
Dilution	WB: 1/500 - 1/2000. IHC-p: 1:100-300 ELISA: 1/20000.. IF 1:50-200
Concentration	1 mg/ml
Purity	≥90%
Storage Stability	-20°C/1 year
Synonyms	ECI1; DCI; Enoyl-CoA delta isomerase 1, mitochondrial; 3,2-trans-enoyl-CoA isomerase; Delta(3),Delta(2)-enoyl-CoA isomerase; D3,D2-enoyl-CoA isomerase; Dodecenoyl-CoA isomerase
Observed Band	30kD
Cell Pathway	Mitochondrion matrix .
Tissue Specificity	Expressed in liver (at protein level).
Function	catalytic activity:(3Z)-dodec-3-enoyl-CoA = (2E)-dodec-2-enoyl-CoA.,function:Able to isomerize both 3-cis and 3-trans double bonds into the 2-trans form in a range of enoyl-CoA species.,pathway:Lipid metabolism; fatty acid beta-oxidation.,similarity:Belongs to the enoyl-CoA hydratase/isomerase family.,subunit:Homotrimer.,
Background	This gene encodes a member of the hydratase/isomerase superfamily. The protein encoded is a key mitochondrial enzyme involved in beta-oxidation of unsaturated fatty acids. It catalyzes the transformation of 3-cis and 3-trans-enoyl-CoA esters arising during the stepwise degradation of cis-, mono-, and polyunsaturated fatty acids to the 2-trans-enoyl-CoA intermediates. Alternatively spliced transcript variants have been described. [provided by RefSeq, May 2010],



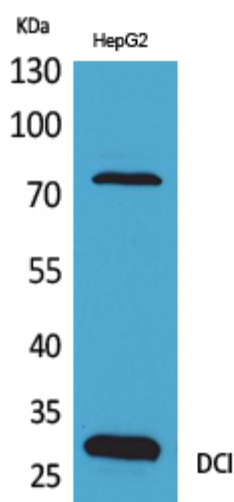
matters needing attention

Avoid repeated freezing and thawing!

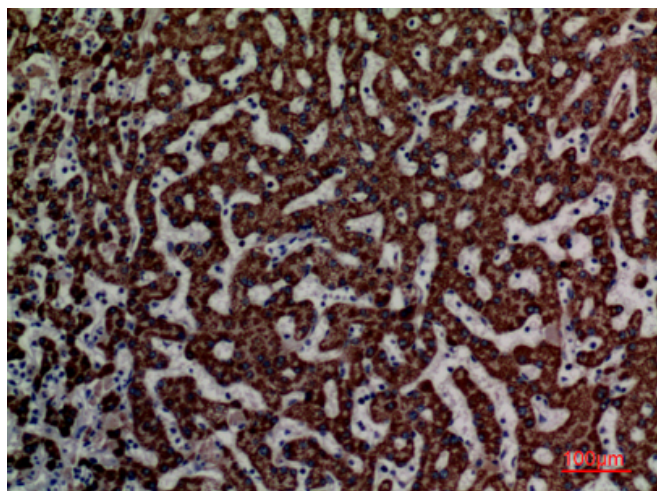
Usage suggestions

This product can be used in immunological reaction related experiments. For more information, please consult technical personnel.

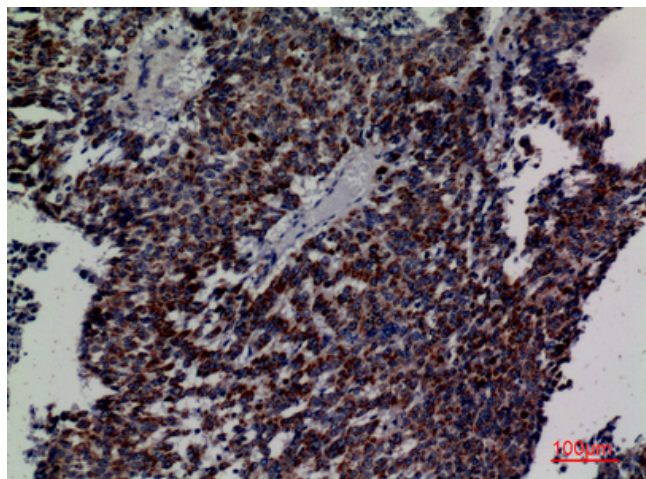
Products Images



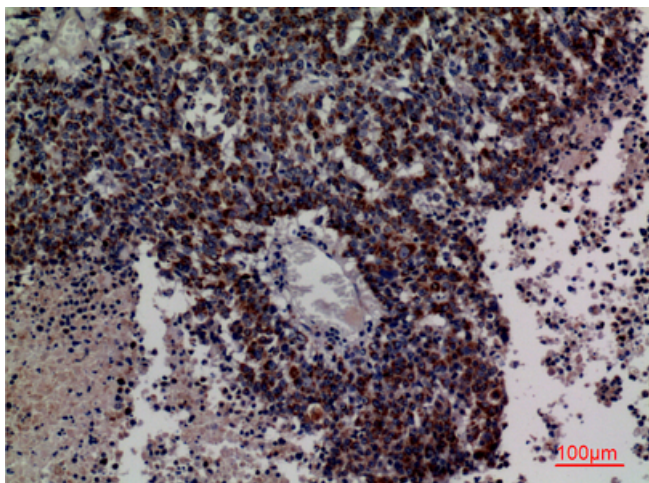
Western Blot analysis of HepG2 cells using DCI Polyclonal Antibody. Secondary antibody(catalog#:RS0002) was diluted at 1:20000



Immunohistochemical analysis of paraffin-embedded human-liver, antibody was diluted at 1:100



Immunohistochemical analysis of paraffin-embedded human-lung-cancer, antibody was diluted at 1:100



Immunohistochemical analysis of paraffin-embedded human-lung-cancer, antibody was diluted at 1:100