



# HSPBAP1 Polyclonal Antibody

<b>Catalog No</b>	YP-Ab-04307
<b>Isotype</b>	IgG
<b>Reactivity</b>	Human;Rat;Mouse;
<b>Applications</b>	WB;IHC;IF;ELISA
<b>Gene Name</b>	HSPBAP1
<b>Protein Name</b>	HSPB1-associated protein 1
<b>Immunogen</b>	The antiserum was produced against synthesized peptide derived from the Internal region of human HSPBAP1. AA range:321-370
<b>Specificity</b>	HSPBAP1 Polyclonal Antibody detects endogenous levels of HSPBAP1 protein.
<b>Formulation</b>	Liquid in PBS containing 50% glycerol, 0.5% BSA and 0.02% sodium azide.
<b>Source</b>	Polyclonal, Rabbit,IgG
<b>Purification</b>	The antibody was affinity-purified from rabbit antiserum by affinity-chromatography using epitope-specific immunogen.
<b>Dilution</b>	WB: 1/500 - 1/2000. IHC-p: 1:100-300 ELISA: 1/20000.. IF 1:50-200
<b>Concentration</b>	1 mg/ml
<b>Purity</b>	≥90%
<b>Storage Stability</b>	-20°C/1 year
<b>Synonyms</b>	HSPBAP1; PASS1; HSPB1-associated protein 1; 27 kDa heat shock protein-associated protein 1; Protein associated with small stress protein 1
<b>Observed Band</b>	55kD
<b>Cell Pathway</b>	Cytoplasm .
<b>Tissue Specificity</b>	Widely expressed.
<b>Function</b>	disease:A chromosomal aberration involving HSPBAP1 is found in familial renal cell carcinoma 1 (RCC1) [MIM:144700]. Translocation t(2;3)(q35;q21) with the putative pseudogene DIRC3. Produces an hybrid mRNA encoding a truncated HSPBAP1 lacking the first 36 amino acids.,function:May play a role in cellular stress response.,similarity:Contains 1 JmjC domain.,subunit:Interacts with CRYAB and HSPB1.,tissue specificity:Widely expressed.,
<b>Background</b>	This gene encodes a protein that binds to one of the small heat shock proteins, specifically hsp27. Hsp27 is involved with cell growth and differentiation. This encoded protein was found to be abnormally expressed in patients with intractable epilepsy, although how brain function is affected remains unknown. [provided by RefSeq, Sep 2011],



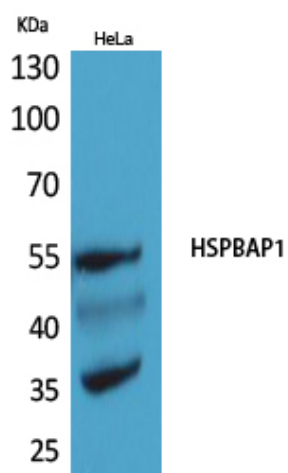
### matters needing attention

Avoid repeated freezing and thawing!

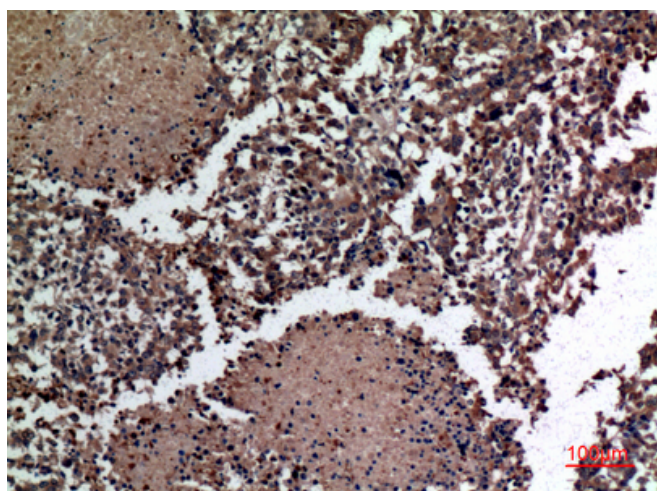
### Usage suggestions

This product can be used in immunological reaction related experiments. For more information, please consult technical personnel.

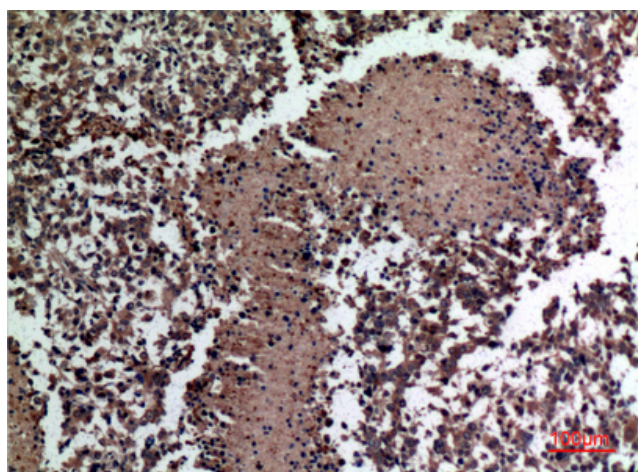
## Products Images



Western Blot analysis of HeLa cells using HSPBAP1 Polyclonal Antibody. Secondary antibody(catalog#:RS0002) was diluted at 1:20000



Immunohistochemical analysis of paraffin-embedded human-lung-cancer, antibody was diluted at 1:100



Immunohistochemical analysis of paraffin-embedded human-lung-cancer, antibody was diluted at 1:100