



# β-1,4-GalNAc-T Polyclonal Antibody

<b>Catalog No</b>	YP-Ab-04290
<b>Isotype</b>	IgG
<b>Reactivity</b>	Human;Mouse;Rat
<b>Applications</b>	WB;IHC;IF;ELISA
<b>Gene Name</b>	CSGALNACT1
<b>Protein Name</b>	Chondroitin sulfate N-acetylgalactosaminyltransferase 1
<b>Immunogen</b>	The antiserum was produced against synthesized peptide derived from human CSGALNACT1. AA range:201-250
<b>Specificity</b>	β-1,4-GalNAc-T Polyclonal Antibody detects endogenous levels of β-1,4-GalNAc-T protein.
<b>Formulation</b>	Liquid in PBS containing 50% glycerol, 0.5% BSA and 0.02% sodium azide.
<b>Source</b>	Polyclonal, Rabbit,IgG
<b>Purification</b>	The antibody was affinity-purified from rabbit antiserum by affinity-chromatography using epitope-specific immunogen.
<b>Dilution</b>	WB: 1/500 - 1/2000. IHC: 1/100 - 1/300. ELISA: 1/40000.. IF 1:50-200
<b>Concentration</b>	1 mg/ml
<b>Purity</b>	≥90%
<b>Storage Stability</b>	-20°C/1 year
<b>Synonyms</b>	CSGALNACT1; CHGN; GALNACT1; Chondroitin sulfate N-acetylgalactosaminyltransferase 1; CsGalNAcT-1; Chondroitin beta-1; 4-N-acetylgalactosaminyltransferase 1; Beta4GalNAcT-1
<b>Observed Band</b>	60kD
<b>Cell Pathway</b>	Golgi apparatus, Golgi stack membrane ; Single-pass type II membrane protein .
<b>Tissue Specificity</b>	Ubiquitous, with the highest levels in placenta, thyroid, bladder, prostate and adrenal gland. Detected at low levels in the other tissues examined.
<b>Function</b>	catalytic activity:UDP-N-acetyl-D-galactosamine + beta-D-glucuronyl-(1->3)-D-galactosyl-proteoglycan = UDP + N-acetyl-D-galactosaminyl-(1->4)-beta-D-glucuronyl-(1->3)-beta-D-galactosylproteoglycan.,function:Transfers 1,4-N-acetylgalactosamine (GalNAc) from UDP-GalNAc to the non-reducing end of glucuronic acid (GlcUA). Required for addition of the first GalNAc to the core tetrasaccharide linker and for elongation of chondroitin chains. Important role in chondroitin chain biosynthesis in cartilage.,online information:Chondroitin beta-1,4-N-acetylgalactosaminyltransferase 1,online information:GlycoGene database,PTM:N-glycosylated.,similarity:Belongs to the chondroitin N-acetylgalactosaminyltransferase family.,tissue specificity:Ubiquitous, with the highest levels in placenta, thyroid, bladder, prostate and adrenal gland. Detected



at low levels in the other tissues examined.,

### Background

catalytic activity:UDP-N-acetyl-D-galactosamine + beta-D-glucuronyl-(1->3)-D-galactosyl-proteoglycan = UDP + N-acetyl-D-galactosaminy-(1->4)-beta-D-glucuronyl-(1->3)-beta-D-galactosylproteoglycan.,function:Transfers 1,4-N-acetylgalactosamine (GalNAc) from UDP-GalNAc to the non-reducing end of glucuronic acid (GlcUA). Required for addition of the first GalNAc to the core tetrasaccharide linker and for elongation of chondroitin chains. Important role in chondroitin chain biosynthesis in cartilage.,online information:Chondroitin beta-1,4-N-acetylgalactosaminyltransferase 1,online information:GlycoGene database,PTM:N-glycosylated.,similarity:Belongs to the chondroitin N-acetylgalactosaminyltransferase family.,tissue specificity:Ubiquitous, with the highest levels in placenta, thyroid, bladder, prostate and adrenal gland. Detected at low levels in the other tissues examined.,

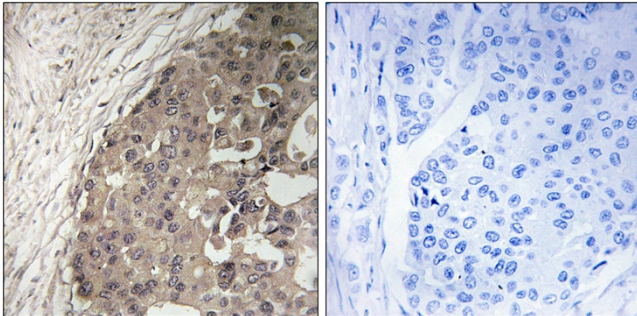
### matters needing attention

Avoid repeated freezing and thawing!

### Usage suggestions

This product can be used in immunological reaction related experiments. For more information, please consult technical personnel.

## Products Images



Immunohistochemistry analysis of paraffin-embedded human breast carcinoma tissue, using CSGALNACT1 Antibody. The picture on the right is blocked with the synthesized peptide.