



ZIP2 Polyclonal Antibody

Catalog No	YP-Ab-04273
Isotype	IgG
Reactivity	Human;Rat;Mouse;
Applications	WB;ELISA
Gene Name	SLC39A2
Protein Name	Zinc transporter ZIP2
Immunogen	The antiserum was produced against synthesized peptide derived from human SLC39A2. AA range:11-60
Specificity	ZIP2 Polyclonal Antibody detects endogenous levels of ZIP2 protein.
Formulation	Liquid in PBS containing 50% glycerol, 0.5% BSA and 0.02% sodium azide.
Source	Polyclonal, Rabbit,IgG
Purification	The antibody was affinity-purified from rabbit antiserum by affinity-chromatography using epitope-specific immunogen.
Dilution	Western Blot: 1/500 - 1/2000. ELISA: 1/10000. Not yet tested in other applications.
Concentration	1 mg/ml
Purity	≥90%
Storage Stability	-20°C/1 year
Synonyms	SLC39A2; ZIP2; Zinc transporter ZIP2; 6A1; Eti-1; Solute carrier family 39 member 2; Zrt- and Irt-like protein 2; ZIP-2; hZIP2
Observed Band	36kD
Cell Pathway	Cell membrane; Multi-pass membrane protein.
Tissue Specificity	Expressed only in prostate and uterine epithelial cells.
Function	function:Mediates zinc uptake. Zinc uptake may be mediated by a Zn(2+)-HCO(3)(-) symport mechanism and can function in the presence of albumin. May also transport other divalent cations. May be important in contact inhibition of normal epithelial cells and loss of its expression may play a role in tumorigenesis.,induction:Shows a dramatic induction in normal epithelial cells contact inhibition.,miscellaneous:Zinc uptake is inhibited at pH levels below 7.0 and is stimulated at higher pH and is significantly inhibited by Cu(2+), Co(2+) and Mn(2+) ions. Not inhibited by Fe(2+).,similarity:Belongs to the ZIP transporter (TC 2.A.5) family.,tissue specificity:Expressed only in prostate and uterine epithelial cells.,
Background	This gene encodes a member of the ZIP family of metal ion transporters. The encoded protein functions as a zinc transporter. Mutations in this gene may be associated with susceptibility to carotid artery disease. Multiple transcript variants



have been described. [provided by RefSeq, Mar 2010],

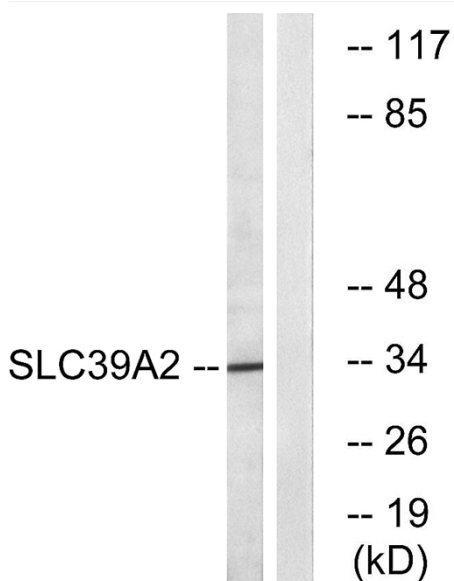
matters needing attention

Avoid repeated freezing and thawing!

Usage suggestions

This product can be used in immunological reaction related experiments. For more information, please consult technical personnel.

Products Images



Western blot analysis of lysates from Jurkat cells, using SLC39A2 Antibody. The lane on the right is blocked with the synthesized peptide.