



VPS26B Polyclonal Antibody

Catalog No	YP-Ab-04265
Isotype	IgG
Reactivity	Human;Mouse
Applications	WB;ELISA
Gene Name	VPS26B
Protein Name	Vacuolar protein sorting-associated protein 26B
Immunogen	The antiserum was produced against synthesized peptide derived from human VPS26B. AA range:231-280
Specificity	VPS26B Polyclonal Antibody detects endogenous levels of VPS26B protein.
Formulation	Liquid in PBS containing 50% glycerol, 0.5% BSA and 0.02% sodium azide.
Source	Polyclonal, Rabbit,IgG
Purification	The antibody was affinity-purified from rabbit antiserum by affinity-chromatography using epitope-specific immunogen.
Dilution	Western Blot: 1/500 - 1/2000. ELISA: 1/10000. Not yet tested in other applications.
Concentration	1 mg/ml
Purity	≥90%
Storage Stability	-20°C/1 year
Synonyms	VPS26B; Vacuolar protein sorting-associated protein 26B; Vesicle protein sorting 26B
Observed Band	45kD
Cell Pathway	Cytoplasm . Membrane; Peripheral membrane protein . Early endosome . Late endosome . Localizes to early and late endosomal structures (By similarity). .
Tissue Specificity	Eye,Lung,Placenta,
Function	function:Probable component of the retromer complex, a complex required to retrieve lysosomal enzyme receptors (IGF2R and M6PR) from endosomes to the trans-Golgi network.,PTM:Phosphorylated upon DNA damage, probably by ATM or ATR.,similarity:Belongs to the VPS26 family.,subcellular location:Does not localize to endosomes.,subunit:Probable component of the retromer complex composed of VPS26 (VPS26A or VPS26B), VPS29, VPS35, SNX1 and SNX2. Interacts directly with VPS35.,
Background	function:Probable component of the retromer complex, a complex required to retrieve lysosomal enzyme receptors (IGF2R and M6PR) from endosomes to the trans-Golgi network.,PTM:Phosphorylated upon DNA damage, probably by ATM or ATR.,similarity:Belongs to the VPS26 family.,subcellular location:Does not localize to endosomes.,subunit:Probable component of the retromer complex composed of VPS26 (VPS26A or VPS26B), VPS29, VPS35, SNX1 and SNX2.



Interacts directly with VPS35.,

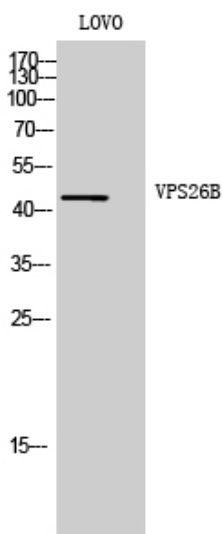
matters needing attention

Avoid repeated freezing and thawing!

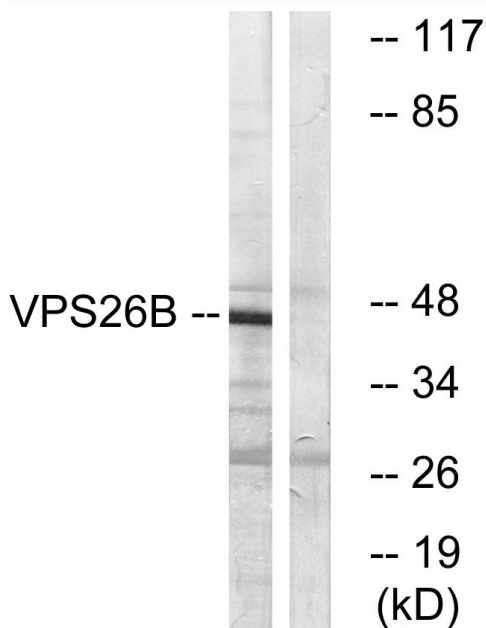
Usage suggestions

This product can be used in immunological reaction related experiments. For more information, please consult technical personnel.

Products Images



Western Blot analysis of LOVO cells using VPS26B Polyclonal Antibody. Secondary antibody(catalog#:RS0002) was diluted at 1:20000



Western blot analysis of lysates from LOVO cells, using VPS26B Antibody. The lane on the right is blocked with the synthesized peptide.