



TAB182 Polyclonal Antibody

Catalog No	YP-Ab-04234
Isotype	IgG
Reactivity	Human;Mouse
Applications	WB;ELISA
Gene Name	TNKS1BP1
Protein Name	182 kDa tankyrase-1-binding protein
Immunogen	The antiserum was produced against synthesized peptide derived from human TNKS1BP1. AA range:1601-1650
Specificity	TAB182 Polyclonal Antibody detects endogenous levels of TAB182 protein.
Formulation	Liquid in PBS containing 50% glycerol, 0.5% BSA and 0.02% sodium azide.
Source	Polyclonal, Rabbit,IgG
Purification	The antibody was affinity-purified from rabbit antiserum by affinity-chromatography using epitope-specific immunogen.
Dilution	Western Blot: 1/500 - 1/2000. ELISA: 1/40000. Not yet tested in other applications.
Concentration	1 mg/ml
Purity	≥90%
Storage Stability	-20°C/1 year
Synonyms	TNKS1BP1; KIAA1741; TAB182; 182 kDa tankyrase-1-binding protein
Observed Band	150kD
Cell Pathway	Nucleus. Cytoplasm, cytoskeleton. Chromosome. Colocalizes with chromosomes during mitosis, and in the cytoplasm with cortical actin.
Tissue Specificity	Detected in testis, ovary, lung, skeletal muscle, heart, prostate and pancreas, and at very low levels in brain and peripheral blood leukocytes.
Function	PTM:ADP-ribosylated by TNKS1 (in vitro).,PTM:Phosphorylated upon DNA damage, probably by ATM or ATR.,subcellular location:Colocalizes with chromosomes during mitosis, and in the cytoplasm with cortical actin.,subunit:Binds to the ANK repeat domain of TNKS1 and TNKS2.,tissue specificity:Detected in testis, ovary, lung, skeletal muscle, heart, prostate and pancreas, and at very low levels in brain and peripheral blood leukocytes.,
Background	PTM:ADP-ribosylated by TNKS1 (in vitro).,PTM:Phosphorylated upon DNA damage, probably by ATM or ATR.,subcellular location:Colocalizes with chromosomes during mitosis, and in the cytoplasm with cortical actin.,subunit:Binds to the ANK repeat domain of TNKS1 and TNKS2.,tissue specificity:Detected in testis, ovary, lung, skeletal muscle, heart, prostate and pancreas, and at very low levels in brain and peripheral blood leukocytes.,



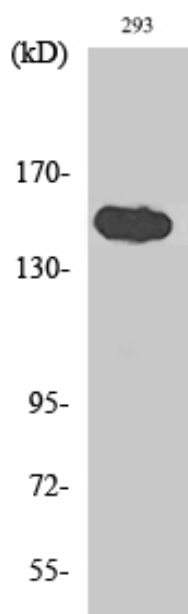
matters needing attention

Avoid repeated freezing and thawing!

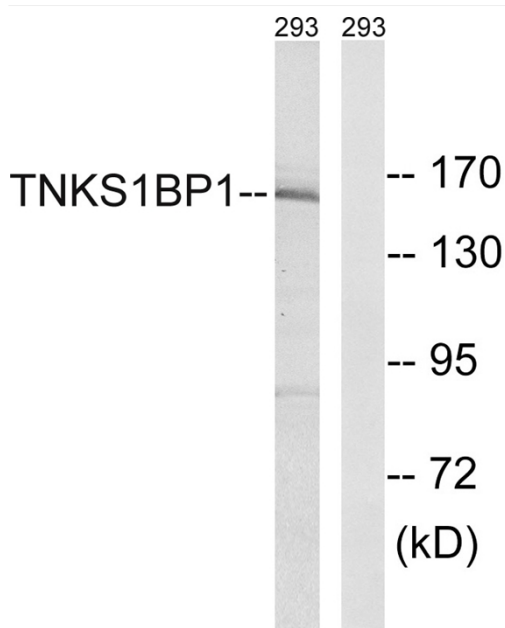
Usage suggestions

This product can be used in immunological reaction related experiments. For more information, please consult technical personnel.

Products Images



Western Blot analysis of various cells using TAB182 Polyclonal Antibody diluted at 1:1000



Western blot analysis of lysates from 293 cells, using TNKS1BP1 Antibody. The lane on the right is blocked with the synthesized peptide.