



Syndecan-4 Polyclonal Antibody

Catalog No	YP-Ab-04232
Isotype	IgG
Reactivity	Human;Mouse;Rat
Applications	WB;IHC;IF;ELISA
Gene Name	SDC4
Protein Name	Syndecan-4
Immunogen	The antiserum was produced against synthesized peptide derived from human Syndecan4. AA range:145-194
Specificity	Syndecan-4 Polyclonal Antibody detects endogenous levels of Syndecan-4 protein.
Formulation	Liquid in PBS containing 50% glycerol, 0.5% BSA and 0.02% sodium azide.
Source	Polyclonal, Rabbit,IgG
Purification	The antibody was affinity-purified from rabbit antiserum by affinity-chromatography using epitope-specific immunogen.
Dilution	Western Blot: 1/500 - 1/2000. Immunohistochemistry: 1/100 - 1/300. Immunofluorescence: 1/200 - 1/1000. ELISA: 1/40000. Not yet tested in other applications.
Concentration	1 mg/ml
Purity	≥90%
Storage Stability	-20°C/1 year
Synonyms	SDC4; Syndecan-4; SYND4; Amphiglycan; Ryudocan core protein
Observed Band	22kD
Cell Pathway	[Isoform 1]: Membrane ; Single-pass type I membrane protein . Secreted . Shedding of the ectodomain produces a soluble form. .; [Isoform 2]: Secreted.
Tissue Specificity	Expressed in epithelial and fibroblastic cells.
Function	function:Cell surface proteoglycan that bears heparan sulfate.,function:Cell surface proteoglycan.,similarity:Belongs to the syndecan proteoglycan family.,subunit:Homodimer. Interacts with CDCP1, with GIPC PDZ domain and with NUDT16L1/SDOS (By similarity). Interacts with SDCBP.,tissue specificity:Expressed in epithelial and fibroblastic cells.,
Background	The protein encoded by this gene is a transmembrane (type I) heparan sulfate proteoglycan that functions as a receptor in intracellular signaling. The encoded protein is found as a homodimer and is a member of the syndecan proteoglycan family. This gene is found on chromosome 20, while a pseudogene has been found on chromosome 22. [provided by RefSeq, Jul 2008],



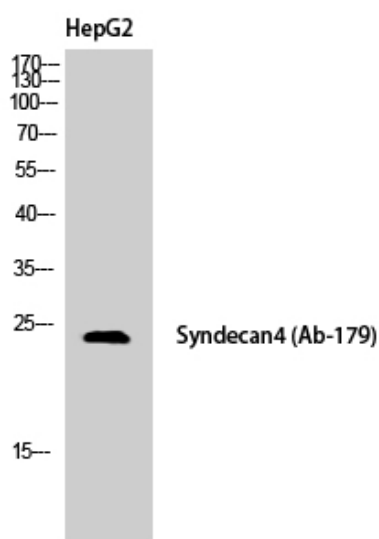
matters needing attention

Avoid repeated freezing and thawing!

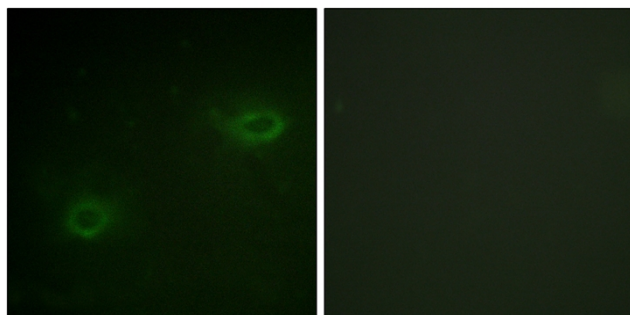
Usage suggestions

This product can be used in immunological reaction related experiments. For more information, please consult technical personnel.

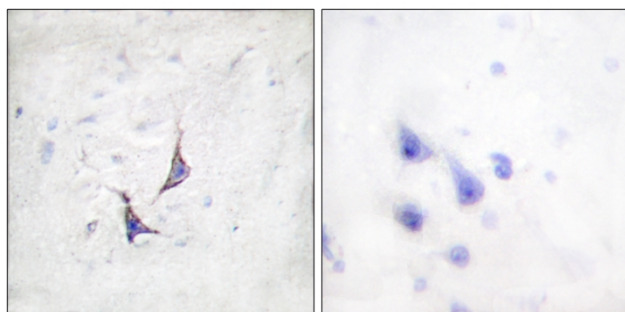
Products Images



Western Blot analysis of HepG2 cells using Syndecan-4 Polyclonal Antibody



Immunofluorescence analysis of HeLa cells, using Syndecan4 Antibody. The picture on the right is blocked with the synthesized peptide.



Immunohistochemistry analysis of paraffin-embedded human brain tissue, using Syndecan4 Antibody. The picture on the right is blocked with the synthesized peptide.



Western blot analysis of lysates from HepG2 cells, using Syndecan4 Antibody. The lane on the right is blocked with the synthesized peptide.

