

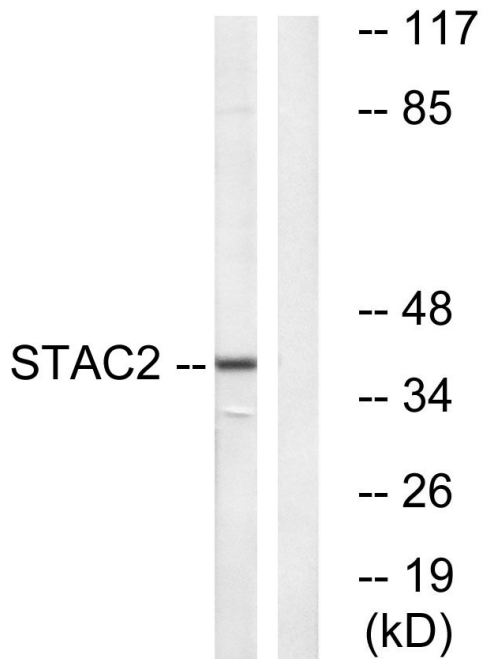


STAC2 Polyclonal Antibody

Catalog No	YP-Ab-04223
Isotype	IgG
Reactivity	Human;Mouse;Rat
Applications	WB;ELISA
Gene Name	STAC2
Protein Name	SH3 and cysteine-rich domain-containing protein 2
Immunogen	The antiserum was produced against synthesized peptide derived from human STAC2. AA range:211-260
Specificity	STAC2 Polyclonal Antibody detects endogenous levels of STAC2 protein.
Formulation	Liquid in PBS containing 50% glycerol, 0.5% BSA and 0.02% sodium azide.
Source	Polyclonal, Rabbit,IgG
Purification	The antibody was affinity-purified from rabbit antiserum by affinity-chromatography using epitope-specific immunogen.
Dilution	Western Blot: 1/500 - 1/2000. ELISA: 1/20000. Not yet tested in other applications.
Concentration	1 mg/ml
Purity	≥90%
Storage Stability	-20°C/1 year
Synonyms	STAC2; SH3 and cysteine-rich domain-containing protein 2; 24b2/STAC2; Src homology 3 and cysteine-rich domain-containing protein 2
Observed Band	40kD
Cell Pathway	Cytoplasm, cytosol . Cell membrane ; Peripheral membrane protein ; Cytoplasmic side . Cell membrane, sarcolemma ; Peripheral membrane protein ; Cytoplasmic side . Colocalizes with CACNA1C at the plasma membrane of transfected cells. .
Tissue Specificity	Brain,Uterus,
Function	similarity:Contains 1 phorbol-ester/DAG-type zinc finger.,similarity:Contains 1 SH3 domain.,
Background	similarity:Contains 1 phorbol-ester/DAG-type zinc finger.,similarity:Contains 1 SH3 domain.,
matters needing attention	Avoid repeated freezing and thawing!
Usage suggestions	This product can be used in immunological reaction related experiments. For more information, please consult technical personnel.



Products Images



Western blot analysis of lysates from K562 cells, using STAC2 Antibody. The lane on the right is blocked with the synthesized peptide.