

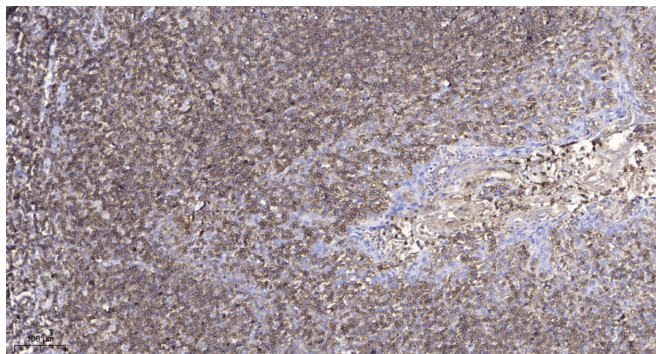


SLC10A4 Polyclonal Antibody

Catalog No	YP-Ab-04215
Isotype	IgG
Reactivity	Human;Rat;Mouse;
Applications	IHC;IF;ELISA
Gene Name	SLC10A4
Protein Name	Sodium/bile acid cotransporter 4
Immunogen	Synthesized peptide derived from SLC10A4 . at AA range: 340-420
Specificity	SLC10A4 Polyclonal Antibody detects endogenous levels of SLC10A4 protein.
Formulation	Liquid in PBS containing 50% glycerol, 0.5% BSA and 0.02% sodium azide.
Source	Polyclonal, Rabbit,IgG
Purification	The antibody was affinity-purified from rabbit antiserum by affinity-chromatography using epitope-specific immunogen.
Dilution	IHC: 1/100 - 1/300. ELISA: 1/10000.. IF 1:50-200
Concentration	1 mg/ml
Purity	≥90%
Storage Stability	-20°C/1 year
Synonyms	SLC10A4; Sodium/bile acid cotransporter 4; Na(+)/bile acid cotransporter 4; Solute carrier family 10 member 4
Observed Band	
Cell Pathway	Cell membrane ; Multi-pass membrane protein .
Tissue Specificity	Highly expressed in brain and small intestine, and moderately expressed in colon, heart, prostate, and testis. Very low levels were detected in kidney, liver, ovary, placenta, spleen, and thymus.
Function	similarity:Belongs to the sodium:bile acid symporter family.,
Background	similarity:Belongs to the sodium:bile acid symporter family.,
matters needing attention	Avoid repeated freezing and thawing!
Usage suggestions	This product can be used in immunological reaction related experiments. For more information, please consult technical personnel.



Products Images



Immunohistochemical analysis of paraffin-embedded human tonsil. 1, Antibody was diluted at 1:200(4° overnight). 2, Tris-EDTA,pH9.0 was used for antigen retrieval. 3,Secondary antibody was diluted at 1:200(room temperature, 45min).