

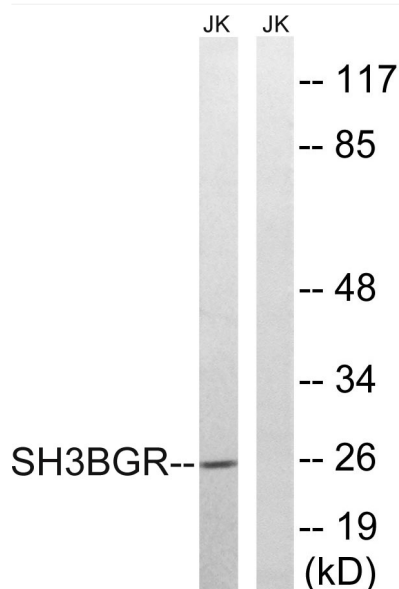


SH3BGR Polyclonal Antibody

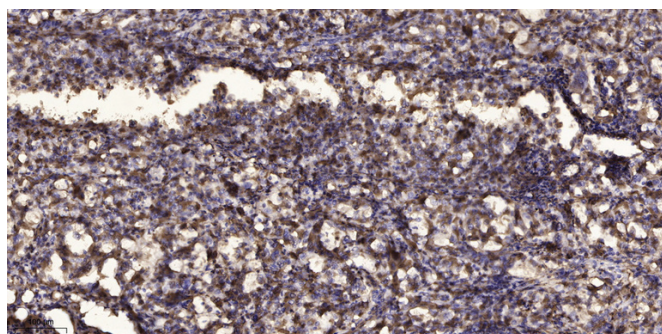
| | |
|----------------------------------|--|
| Catalog No | YP-Ab-04206 |
| Isotype | IgG |
| Reactivity | Human;Mouse;Rat |
| Applications | WB;IHC |
| Gene Name | SH3BGR |
| Protein Name | SH3 domain-binding glutamic acid-rich protein |
| Immunogen | The antiserum was produced against synthesized peptide derived from human SH3BGR. AA range:81-130 |
| Specificity | SH3BGR Polyclonal Antibody detects endogenous levels of SH3BGR protein. |
| Formulation | Liquid in PBS containing 50% glycerol, 0.5% BSA and 0.02% sodium azide. |
| Source | Polyclonal, Rabbit,IgG |
| Purification | The antibody was affinity-purified from rabbit antiserum by affinity-chromatography using epitope-specific immunogen. |
| Dilution | WB 1:500-2000;IHC-p 1:50-300 |
| Concentration | 1 mg/ml |
| Purity | ≥90% |
| Storage Stability | -20°C/1 year |
| Synonyms | SH3BGR; SH3 domain-binding glutamic acid-rich protein; SH3BGR protein; 21-glutamic acid-rich protein; 21-GARP |
| Observed Band | 26kD |
| Cell Pathway | cytosol, |
| Tissue Specificity | Expressed in heart and skeletal muscle. |
| Function | caution:It is uncertain whether Met-1 or Met-64 is the initiator.,similarity:Belongs to the SH3BGR family.,tissue specificity:Expressed in heart and skeletal muscle., |
| Background | caution:It is uncertain whether Met-1 or Met-64 is the initiator.,similarity:Belongs to the SH3BGR family.,tissue specificity:Expressed in heart and skeletal muscle., |
| matters needing attention | Avoid repeated freezing and thawing! |
| Usage suggestions | This product can be used in immunological reaction related experiments. For more information, please consult technical personnel. |



Products Images



Western blot analysis of lysates from Jurkat cells, using SH3BGR Antibody. The lane on the right is blocked with the synthesized peptide.



Immunohistochemical analysis of paraffin-embedded human Squamous cell carcinoma of lung. 1, Antibody was diluted at 1:200(4° overnight). 2, Tris-EDTA,pH9.0 was used for antigen retrieval. 3,Secondary antibody was diluted at 1:200(room temperature, 45min).