

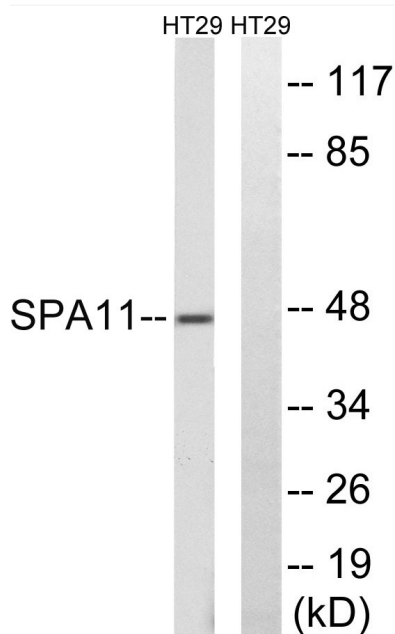


# Serpin A11 Polyclonal Antibody

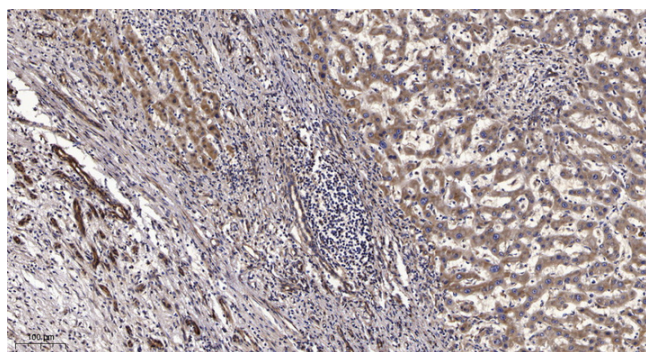
|                                  |   |
|----------------------------------|---|
| <b>Catalog No</b>                | YP-Ab-04203   |
| <b>Isotype</b>                   | IgG   |
| <b>Reactivity</b>                | Human;Rat;Mouse;  |
| <b>Applications</b>              | WB;IHC  |
| <b>Gene Name</b>                 | SERPINA11   |
| <b>Protein Name</b>              | Serpin A11  |
| <b>Immunogen</b>                 | The antiserum was produced against synthesized peptide derived from human SERPINA11. AA range:191-240                             |
| <b>Specificity</b>               | Serpin A11 Polyclonal Antibody detects endogenous levels of Serpin A11 protein.   |
| <b>Formulation</b>               | Liquid in PBS containing 50% glycerol, 0.5% BSA and 0.02% sodium azide.   |
| <b>Source</b>                    | Polyclonal, Rabbit,IgG  |
| <b>Purification</b>              | The antibody was affinity-purified from rabbit antiserum by affinity-chromatography using epitope-specific immunogen.             |
| <b>Dilution</b>                  | WB 1:500-2000;IHC-p 1:50-300  |
| <b>Concentration</b>             | 1 mg/ml   |
| <b>Purity</b>                    | ≥90%  |
| <b>Storage Stability</b>         | -20°C/1 year  |
| <b>Synonyms</b>                  | SERPINA11; Serpin A11   |
| <b>Observed Band</b>             | 47kD  |
| <b>Cell Pathway</b>              | Secreted .  |
| <b>Tissue Specificity</b>        | Fetal liver,  |
| <b>Function</b>                  | similarity:Belongs to the serpin family.,   |
| <b>Background</b>                | similarity:Belongs to the serpin family.,   |
| <b>matters needing attention</b> | Avoid repeated freezing and thawing!  |
| <b>Usage suggestions</b>         | This product can be used in immunological reaction related experiments. For more information, please consult technical personnel. |



## Products Images



Western blot analysis of lysates from HT-29 cells, using SERPINA11 Antibody. The lane on the right is blocked with the synthesized peptide.



Immunohistochemical analysis of paraffin-embedded human liver cancer. 1, Antibody was diluted at 1:200(4° overnight). 2, Tris-EDTA, pH9.0 was used for antigen retrieval. 3, Secondary antibody was diluted at 1:200(room temperature, 45min).