



Septin 6 Polyclonal Antibody

Catalog No	YP-Ab-04200
Isotype	IgG
Reactivity	Human;Mouse;Rat
Applications	WB;IHC;IF;ELISA
Gene Name	45175
Protein Name	Septin-6
Immunogen	The antiserum was produced against synthesized peptide derived from human SEPT6. AA range:223-272
Specificity	Septin 6 Polyclonal Antibody detects endogenous levels of Septin 6 protein.
Formulation	Liquid in PBS containing 50% glycerol, 0.5% BSA and 0.02% sodium azide.
Source	Polyclonal, Rabbit,IgG
Purification	The antibody was affinity-purified from rabbit antiserum by affinity-chromatography using epitope-specific immunogen.
Dilution	WB: 1/500 - 1/2000. IHC: 1/100 - 1/300. ELISA: 1/40000.. IF 1:50-200
Concentration	1 mg/ml
Purity	≥90%
Storage Stability	-20°C/1 year
Synonyms	SEPT6; KIAA0128; SEP2; Septin-6
Observed Band	50kD
Cell Pathway	Cytoplasm . Cytoplasm, cytoskeleton, spindle . Chromosome, centromere, kinetochore . Cleavage furrow . Midbody . Cell projection, cilium, flagellum . In metaphase cells, localized within the microtubule spindle. At the metaphase plate, in close apposition to the kinetochores of the congressed chromosomes. In cells undergoing cytokinesis, localized to the midbody, the ingressing cleavage furrow, and the central spindle. Found in the sperm annulus (PubMed:25588830). .
Tissue Specificity	Widely expressed.
Function	function:Involved in cytokinesis .,PTM:Phosphorylated upon DNA damage, probably by ATM or ATR.,similarity:Belongs to the septin family.,subunit:Heterohexamer composed of two heterotrimers containing one copy each of SEPT2, SEPT6 and SEPT7. The asymmetrical heterotrimers associate head-to-head to form a hexameric unit that assembles into filaments. Interacts with SEPT12. Interaction with SEPT12 alters filament structure.,
Background	septin 6(SEPT6) Homo sapiens This gene is a member of the septin family of GTPases. Members of this family are required for cytokinesis. One version of pediatric acute myeloid leukemia is the result of a reciprocal translocation between chromosomes 11 and X, with the breakpoint associated with the genes



encoding the mixed-lineage leukemia and septin 2 proteins. This gene encodes four transcript variants encoding three distinct isoforms. An additional transcript variant has been identified, but its biological validity has not been determined. [provided by RefSeq, Jul 2008],

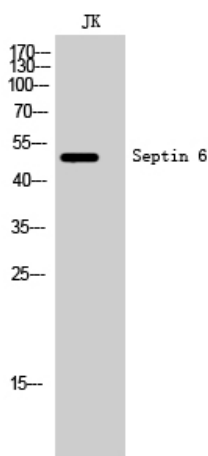
matters needing attention

Avoid repeated freezing and thawing!

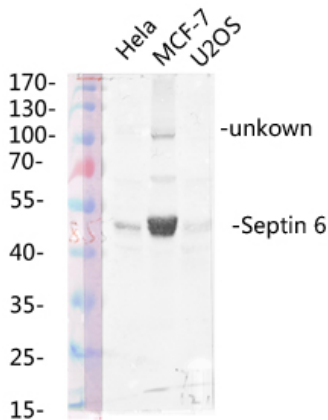
Usage suggestions

This product can be used in immunological reaction related experiments. For more information, please consult technical personnel.

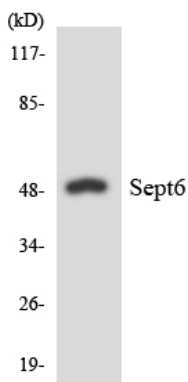
Products Images



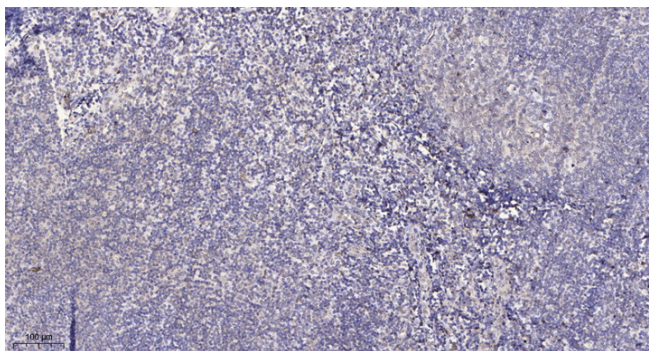
Western Blot analysis of JK cells using Septin 6 Polyclonal Antibody diluted at 1:1000



Western blot analysis of various lysis using Septin 6 Polyclonal Antibody diluted at 1:1000. Secondary antibody(catalog#:RS0002) was diluted at 1:20000



Western blot analysis of the lysates from HeLa cells using SEPT6 antibody.



Immunohistochemical analysis of paraffin-embedded human tonsil. 1, Antibody was diluted at 1:200(4° overnight). 2, Tris-EDTA,pH9.0 was used for antigen retrieval. 3,Secondary antibody was diluted at 1:200(room temperature, 30min).