

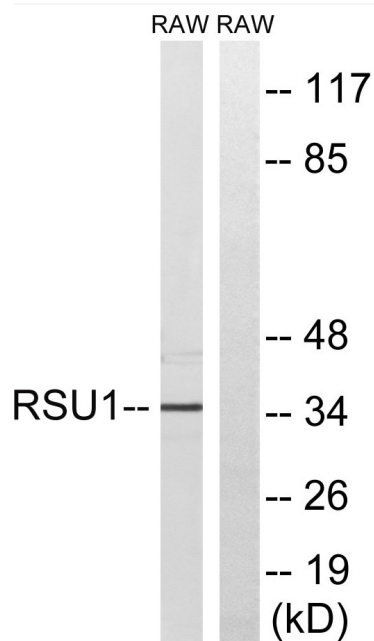


# Rsu-1 Polyclonal Antibody

|                                  |   |
|----------------------------------|---|
| <b>Catalog No</b>                | YP-Ab-04181   |
| <b>Isotype</b>                   | IgG   |
| <b>Reactivity</b>                | Human;Mouse   |
| <b>Applications</b>              | WB;ELISA  |
| <b>Gene Name</b>                 | RSU1  |
| <b>Protein Name</b>              | Ras suppressor protein 1  |
| <b>Immunogen</b>                 | The antiserum was produced against synthesized peptide derived from human RSU1. AA range:187-236  |
| <b>Specificity</b>               | Rsu-1 Polyclonal Antibody detects endogenous levels of Rsu-1 protein.   |
| <b>Formulation</b>               | Liquid in PBS containing 50% glycerol, 0.5% BSA and 0.02% sodium azide.   |
| <b>Source</b>                    | Polyclonal, Rabbit,IgG  |
| <b>Purification</b>              | The antibody was affinity-purified from rabbit antiserum by affinity-chromatography using epitope-specific immunogen.   |
| <b>Dilution</b>                  | Western Blot: 1/500 - 1/2000. ELISA: 1/20000. Not yet tested in other applications.   |
| <b>Concentration</b>             | 1 mg/ml   |
| <b>Purity</b>                    | ≥90%  |
| <b>Storage Stability</b>         | -20°C/1 year  |
| <b>Synonyms</b>                  | RSU1; RSP1; Ras suppressor protein 1; RSP-1; Rsu-1  |
| <b>Observed Band</b>             | 36kD  |
| <b>Cell Pathway</b>              | cytosol,focal adhesion,extracellular exosome,   |
| <b>Tissue Specificity</b>        | Adipocyte,Blood vessels- blood vessel,Brain,Eye,Platelet,Skin,Thalamus,Trachea,   |
| <b>Function</b>                  | function:Potentially plays a role in the Ras signal transduction pathway. Capable of suppressing v-Ras transformation in vitro.,similarity:Contains 7 LRR (leucine-rich) repeats.,  |
| <b>Background</b>                | This gene encodes a protein that is involved in the Ras signal transduction pathway, growth inhibition, and nerve-growth factor induced differentiation processes, as determined in mouse and human cell line studies. In mouse, the encoded protein was initially isolated based on its ability to inhibit v-Ras transformation. Multiple alternatively spliced transcript variants for this gene have been reported; one of these variants was found only in glioma tumors. [provided by RefSeq, Jul 2008], |
| <b>matters needing attention</b> | Avoid repeated freezing and thawing!  |

**Usage suggestions**

This product can be used in immunological reaction related experiments. For more information, please consult technical personnel.

**Products Images**

Western blot analysis of lysates from RAW264.7 cells, using RSU1 Antibody. The lane on the right is blocked with the synthesized peptide.