



Ribosomal Protein S4X Polyclonal Antibody

Catalog No	YP-Ab-04168
Isotype	IgG
Reactivity	Human;Mouse;Rat;Cat
Applications	WB;ELISA;IHC
Gene Name	RPS4X
Protein Name	40S ribosomal protein S4 X isoform
Immunogen	The antiserum was produced against synthesized peptide derived from human RPS4X. AA range:81-130
Specificity	Ribosomal Protein S4X Polyclonal Antibody detects endogenous levels of Ribosomal Protein S4X protein.
Formulation	Liquid in PBS containing 50% glycerol, 0.5% BSA and 0.02% sodium azide.
Source	Polyclonal, Rabbit,IgG
Purification	The antibody was affinity-purified from rabbit antiserum by affinity-chromatography using epitope-specific immunogen.
Dilution	WB 1:500-2000;IHC-p 1:50-300; ELISA 2000-20000
Concentration	1 mg/ml
Purity	≥90%
Storage Stability	-20°C/1 year
Synonyms	RPS4X; CCG2; RPS4; SCAR; 40S ribosomal protein S4; X isoform; SCR10; Single copy abundant mRNA protein
Observed Band	30kD
Cell Pathway	Cytoplasm . Localized in cytoplasmic mRNP granules containing untranslated mRNAs.
Tissue Specificity	Adipose tissue,Brain,Cerebellum,Eye,Muscle,Placenta,Thymus,
Function	miscellaneous:This isoform is encoded on the X chromosome.,similarity:Belongs to the ribosomal protein S4e family.,similarity:Contains 1 S4 RNA-binding domain.,
Background	Cytoplasmic ribosomes, organelles that catalyze protein synthesis, consist of a small 40S subunit and a large 60S subunit. Together these subunits are composed of 4 RNA species and approximately 80 structurally distinct proteins. This gene encodes ribosomal protein S4, a component of the 40S subunit. Ribosomal protein S4 is the only ribosomal protein known to be encoded by more than one gene, namely this gene and ribosomal protein S4, Y-linked (RPS4Y). The 2 isoforms encoded by these genes are not identical, but are functionally equivalent. Ribosomal protein S4 belongs to the S4E family of ribosomal proteins. This gene is not subject to X-inactivation. It has been suggested that haploinsufficiency of the ribosomal protein S4 genes plays a role in Turner



syndrome; however, this hypothesis is controversial. As is typical for genes encoding ribosomal proteins, there are multiple processed pseud

matters needing attention

Avoid repeated freezing and thawing!

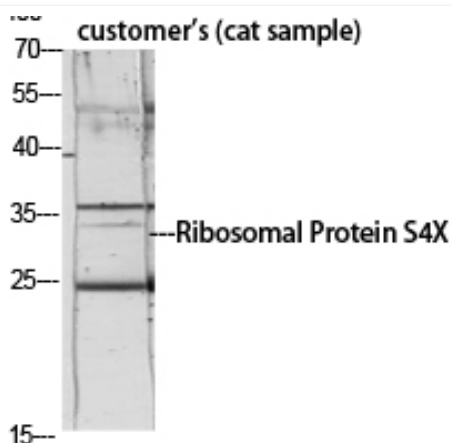
Usage suggestions

This product can be used in immunological reaction related experiments. For more information, please consult technical personnel.

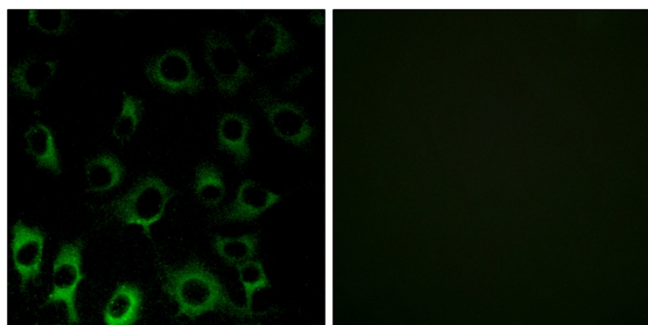
Products Images



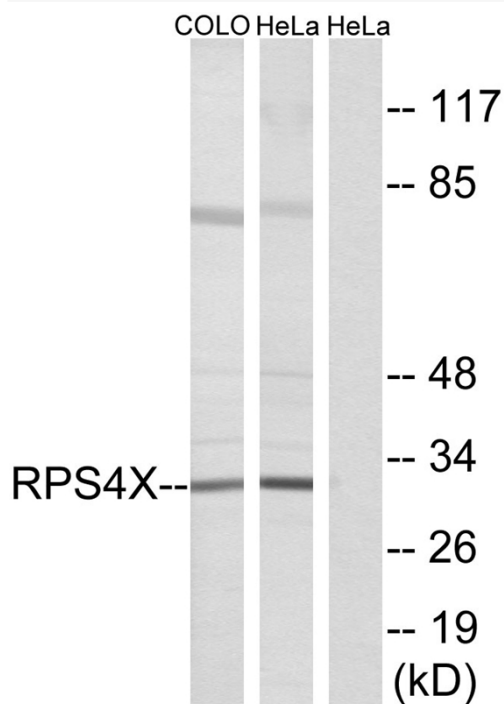
Western Blot analysis of various cells using Ribosomal Protein S4X Polyclonal Antibody diluted at 1:1000



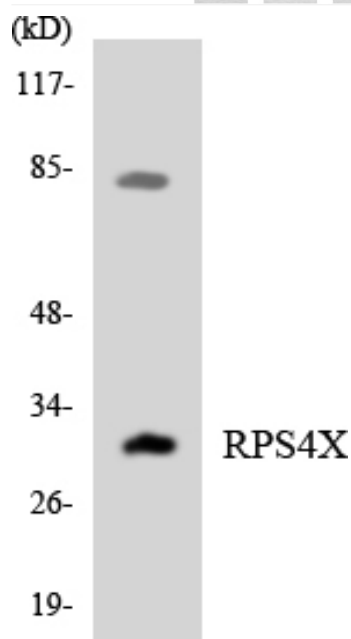
Western Blot analysis of customer's (cat sample) using Ribosomal Protein S4X Polyclonal Antibody diluted at 1:1000



Immunofluorescence analysis of HUVEC cells, using RPS4X Antibody. The picture on the right is blocked with the synthesized peptide.



Western blot analysis of lysates from HeLa and COLO cells, using RPS4X Antibody. The lane on the right is blocked with the synthesized peptide.



Western blot analysis of the lysates from HT-29 cells using RPS4X antibody.