

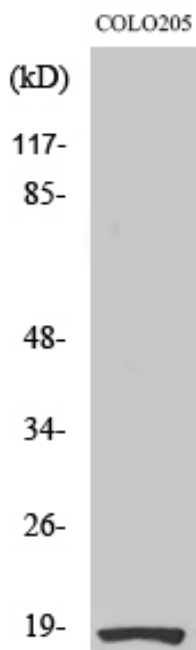


Ribosomal Protein S27L Polyclonal Antibody

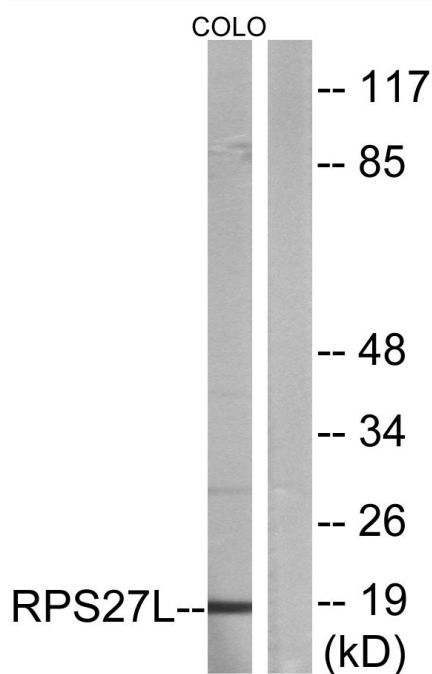
Catalog No	YP-Ab-04166
Isotype	IgG
Reactivity	Human;Mouse
Applications	WB;IHC;IF;ELISA
Gene Name	RPS27L
Protein Name	40S ribosomal protein S27-like
Immunogen	The antiserum was produced against synthesized peptide derived from human RPS27L. AA range:1-50
Specificity	Ribosomal Protein S27L Polyclonal Antibody detects endogenous levels of Ribosomal Protein S27L protein.
Formulation	Liquid in PBS containing 50% glycerol, 0.5% BSA and 0.02% sodium azide.
Source	Polyclonal, Rabbit,IgG
Purification	The antibody was affinity-purified from rabbit antiserum by affinity-chromatography using epitope-specific immunogen.
Dilution	WB: 1/500 - 1/2000. IHC: 1/100 - 1/300. ELISA: 1/10000.. IF 1:50-200
Concentration	1 mg/ml
Purity	≥90%
Storage Stability	-20°C/1 year
Synonyms	RPS27L; 40S ribosomal protein S27-like
Observed Band	18kD
Cell Pathway	nucleus,nucleoplasm,ribosome,cytosolic small ribosomal subunit,
Tissue Specificity	Kidney,Umbilical cord blood,
Function	cofactor:Binds 1 zinc ion per subunit .,similarity:Belongs to the ribosomal protein S27e family.,
Background	This gene encodes a protein sharing 96% amino acid similarity with ribosomal protein S27, which suggests the encoded protein may be a component of the 40S ribosomal subunit. [provided by RefSeq, Jul 2008],
matters needing attention	Avoid repeated freezing and thawing!
Usage suggestions	This product can be used in immunological reaction related experiments. For more information, please consult technical personnel.



Products Images



Western Blot analysis of various cells using Ribosomal Protein S27L Polyclonal Antibody



Western blot analysis of lysates from COLO cells, using RPS27L Antibody. The lane on the right is blocked with the synthesized peptide.

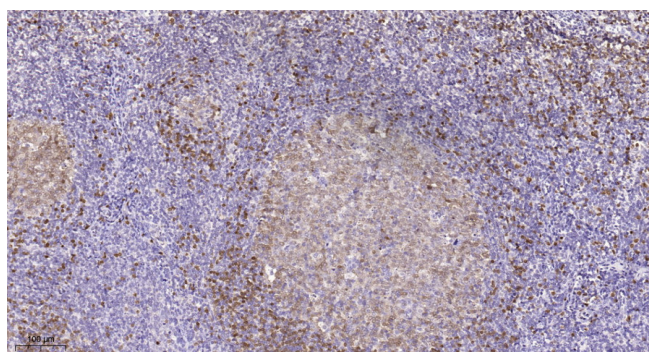


(kD)
85-
48-
34-
26-
19-



RPS27L

Western blot analysis of the lysates from COLO205 cells using RPS27L antibody.



Immunohistochemical analysis of paraffin-embedded human tonsil. 1, Tris-EDTA, pH9.0 was used for antigen retrieval. 2 Antibody was diluted at 1:200 (4° overnight). 3, Secondary antibody was diluted at 1:200 (room temperature, 45min).