

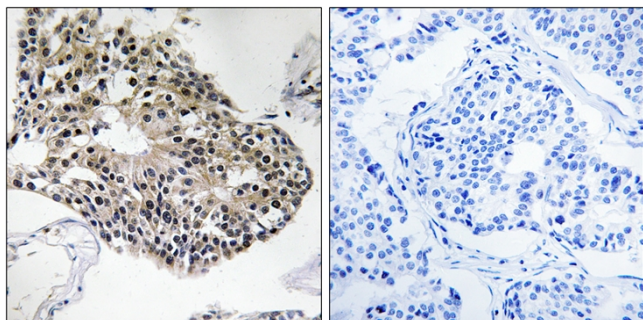


Ribosomal Protein S25 Polyclonal Antibody

Catalog No	YP-Ab-04165
Isotype	IgG
Reactivity	Human;Mouse;Rat
Applications	IHC;IF;ELISA
Gene Name	RPS25
Protein Name	40S ribosomal protein S25
Immunogen	The antiserum was produced against synthesized peptide derived from human RPS25. AA range:76-125
Specificity	Ribosomal Protein S25 Polyclonal Antibody detects endogenous levels of Ribosomal Protein S25 protein.
Formulation	Liquid in PBS containing 50% glycerol, 0.5% BSA and 0.02% sodium azide.
Source	Polyclonal, Rabbit,IgG
Purification	The antibody was affinity-purified from rabbit antiserum by affinity-chromatography using epitope-specific immunogen.
Dilution	WB 1:500-2000 ,IHC: 1/100 - 1/300. ELISA: 1/10000.. IF 1:50-200
Concentration	1 mg/ml
Purity	≥90%
Storage Stability	-20°C/1 year
Synonyms	RPS25; 40S ribosomal protein S25
Observed Band	
Cell Pathway	nucleus,nucleoplasm,nucleolus,cytoplasm,cytosol,ribosome,small ribosomal subunit,cytosolic small ribosomal subunit,extracellular matrix,extracellular exosome,
Tissue Specificity	Pancreas,Placenta,Skin,
Function	similarity:Belongs to the ribosomal protein S25e family.,
Background	Ribosomes, the organelles that catalyze protein synthesis, consist of a small 40S subunit and a large 60S subunit. Together these subunits are composed of 4 RNA species and approximately 80 structurally distinct proteins. This gene encodes a ribosomal protein that is a component of the 40S subunit. The protein belongs to the S25E family of ribosomal proteins. It is located in the cytoplasm. As is typical for genes encoding ribosomal proteins, there are multiple processed pseudogenes of this gene dispersed through the genome. [provided by RefSeq, Jul 2008],
matters needing attention	Avoid repeated freezing and thawing!

**Usage suggestions**

This product can be used in immunological reaction related experiments. For more information, please consult technical personnel.

Products Images

Immunohistochemistry analysis of paraffin-embedded human breast carcinoma tissue, using RPS25 Antibody. The picture on the right is blocked with the synthesized peptide.