



Ribosomal Protein S20 Polyclonal Antibody

Catalog No	YP-Ab-04162
Isotype	IgG
Reactivity	Human;Mouse;Rat
Applications	WB;IHC;IF;ELISA
Gene Name	RPS20
Protein Name	40S ribosomal protein S20
Immunogen	The antiserum was produced against synthesized peptide derived from human RPS20. AA range:31-80
Specificity	Ribosomal Protein S20 Polyclonal Antibody detects endogenous levels of Ribosomal Protein S20 protein.
Formulation	Liquid in PBS containing 50% glycerol, 0.5% BSA and 0.02% sodium azide.
Source	Polyclonal, Rabbit,IgG
Purification	The antibody was affinity-purified from rabbit antiserum by affinity-chromatography using epitope-specific immunogen.
Dilution	Western Blot: 1/500 - 1/2000. Immunohistochemistry: 1/100 - 1/300. Immunofluorescence: 1/200 - 1/1000. ELISA: 1/40000. Not yet tested in other applications.
Concentration	1 mg/ml
Purity	≥90%
Storage Stability	-20°C/1 year
Synonyms	RPS20; 40S ribosomal protein S20
Observed Band	13kD
Cell Pathway	Cytoplasm .
Tissue Specificity	Colon adenocarcinoma,Ovary,Placenta,Synovial membrane tissue,Testis,
Function	similarity:Belongs to the ribosomal protein S10P family.,
Background	Ribosomes, the organelles that catalyze protein synthesis, consist of a small 40S subunit and a large 60S subunit. Together these subunits are composed of 4 RNA species and approximately 80 structurally distinct proteins. This gene encodes a ribosomal protein that is a component of the 40S subunit. The protein belongs to the S10P family of ribosomal proteins. It is located in the cytoplasm. This gene is co-transcribed with the small nucleolar RNA gene U54, which is located in its second intron. As is typical for genes encoding ribosomal proteins, there are multiple processed pseudogenes of this gene dispersed through the genome. Two transcript variants encoding different isoforms have been identified for this gene. [provided by RefSeq, Apr 2009],



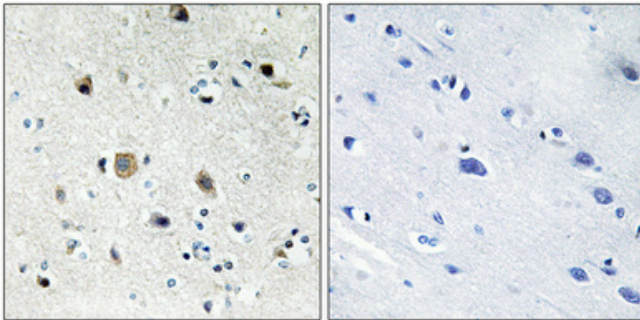
matters needing attention

Avoid repeated freezing and thawing!

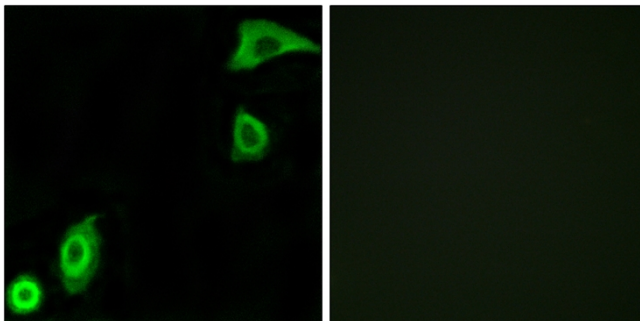
Usage suggestions

This product can be used in immunological reaction related experiments. For more information, please consult technical personnel.

Products Images

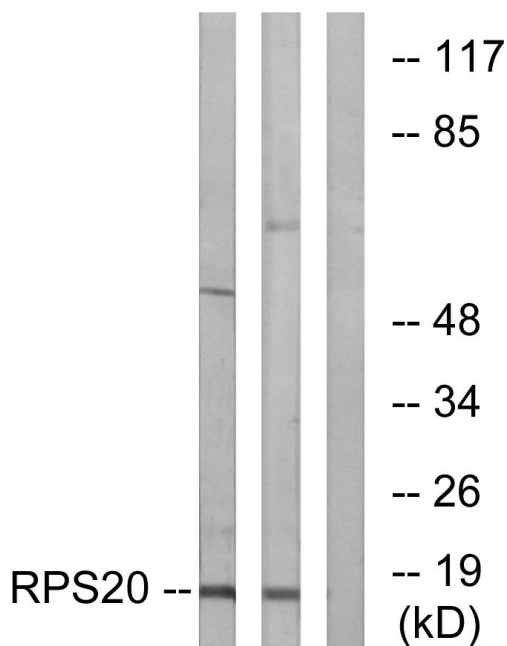


Immunohistochemical analysis of paraffin-embedded Human brain. Antibody was diluted at 1:100(4° overnight). High-pressure and temperature Tris-EDTA, pH8.0 was used for antigen retrieval. Negative control (right) obtained from antibody was pre-absorbed by immunogen peptide.



Immunofluorescence analysis of A549 cells, using RPS20 Antibody. The picture on the right is blocked with the synthesized peptide.

HUVEC MCF-7 HUVEC



Western blot analysis of lysates from HUVEC and MCF-7 cells, using RPS20 Antibody. The lane on the right is blocked with the synthesized peptide.