

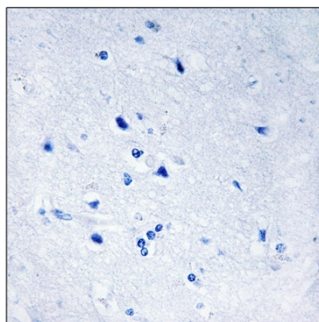
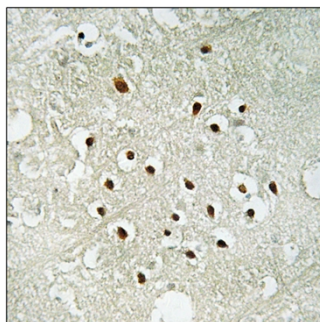


# Ribosomal Protein S19BP Polyclonal Antibody

<b>Catalog No</b>	YP-Ab-04160
<b>Isotype</b>	IgG
<b>Reactivity</b>	Human;Rat;Mouse;
<b>Applications</b>	IHC;IF;ELISA
<b>Gene Name</b>	RPS19BP1
<b>Protein Name</b>	Active regulator of SIRT1
<b>Immunogen</b>	The antiserum was produced against synthesized peptide derived from human RPS19BP1. AA range:71-120
<b>Specificity</b>	Ribosomal Protein S19BP Polyclonal Antibody detects endogenous levels of Ribosomal Protein S19BP protein.
<b>Formulation</b>	Liquid in PBS containing 50% glycerol, 0.5% BSA and 0.02% sodium azide.
<b>Source</b>	Polyclonal, Rabbit,IgG
<b>Purification</b>	The antibody was affinity-purified from rabbit antiserum by affinity-chromatography using epitope-specific immunogen.
<b>Dilution</b>	IHC: 1/100 - 1/300. ELISA: 1/10000.. IF 1:50-200
<b>Concentration</b>	1 mg/ml
<b>Purity</b>	≥90%
<b>Storage Stability</b>	-20°C/1 year
<b>Synonyms</b>	RPS19BP1; AROS; Active regulator of SIRT1; 40S ribosomal protein S19-binding protein 1; RPS19-binding protein 1; S19BP
<b>Observed Band</b>	
<b>Cell Pathway</b>	Nucleus, nucleolus .
<b>Tissue Specificity</b>	Widely expressed (at protein level).
<b>Function</b>	function:Direct regulator of SIRT1. Enhances SIRT1-mediated deacetylation of p53/TP53, thereby participating in inhibition of p53/TP53-mediated transcriptional activity.,similarity:Belongs to the AROS family.,subunit:Interacts with RPS19 (By similarity). Interacts with SIRT1.,tissue specificity:Widely expressed (at protein level).,
<b>Background</b>	function:Direct regulator of SIRT1. Enhances SIRT1-mediated deacetylation of p53/TP53, thereby participating in inhibition of p53/TP53-mediated transcriptional activity.,similarity:Belongs to the AROS family.,subunit:Interacts with RPS19 (By similarity). Interacts with SIRT1.,tissue specificity:Widely expressed (at protein level).,
<b>matters needing attention</b>	Avoid repeated freezing and thawing!

**Usage suggestions**

This product can be used in immunological reaction related experiments. For more information, please consult technical personnel.

**Products Images**

Immunohistochemistry analysis of paraffin-embedded human brain tissue, using RPS19BP1 Antibody. The picture on the right is blocked with the synthesized peptide.