

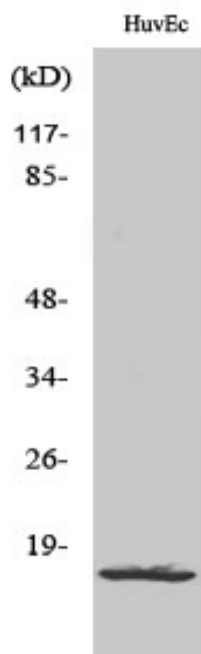


Ribosomal Protein L26L Polyclonal Antibody

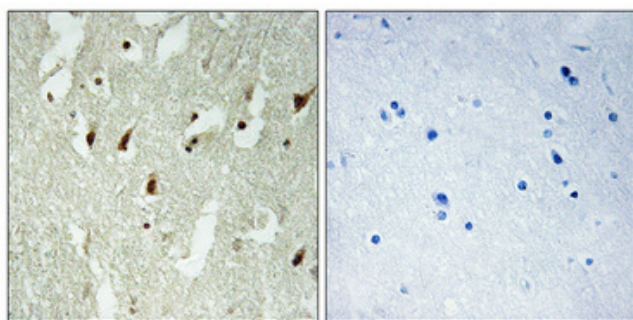
Catalog No	YP-Ab-04135
Isotype	IgG
Reactivity	Human;Mouse;Rat
Applications	WB;IHC;IF;ELISA
Gene Name	RPL26L1
Protein Name	60S ribosomal protein L26-like 1
Immunogen	The antiserum was produced against synthesized peptide derived from human RPL26L. AA range:96-145
Specificity	Ribosomal Protein L26L Polyclonal Antibody detects endogenous levels of Ribosomal Protein L26L protein.
Formulation	Liquid in PBS containing 50% glycerol, 0.5% BSA and 0.02% sodium azide.
Source	Polyclonal, Rabbit,IgG
Purification	The antibody was affinity-purified from rabbit antiserum by affinity-chromatography using epitope-specific immunogen.
Dilution	WB: 1/500 - 1/2000. IHC: 1/100 - 1/300. ELISA: 1/40000.. IF 1:50-200
Concentration	1 mg/ml
Purity	≥90%
Storage Stability	-20°C/1 year
Synonyms	RPL26L1; RPL26P1; 60S ribosomal protein L26-like 1
Observed Band	20kD
Cell Pathway	cytosol,large ribosomal subunit,cytosolic large ribosomal subunit,extracellular exosome,
Tissue Specificity	Lung,Umbilical cord blood,
Function	similarity:Belongs to the ribosomal protein L24P family.,
Background	This gene encodes a protein that shares high sequence similarity with ribosomal protein L26. Alternative splicing results in multiple transcript variants encoding the same protein. [provided by RefSeq, Dec 2015],
matters needing attention	Avoid repeated freezing and thawing!
Usage suggestions	This product can be used in immunological reaction related experiments. For more information, please consult technical personnel.



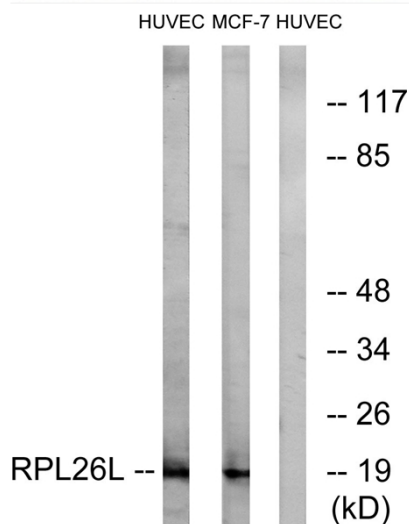
Products Images



Western Blot analysis of various cells using Ribosomal Protein L26L Polyclonal Antibody diluted at 1:2000



Immunohistochemical analysis of paraffin-embedded Human brain. Antibody was diluted at 1:100 (4° overnight). High-pressure and temperature Tris-EDTA, pH 8.0 was used for antigen retrieval. Negative control (right) obtained from antibody was pre-absorbed by immunogen peptide.



Western blot analysis of lysates from HUVEC and MCF-7 cells, using RPL26L Antibody. The lane on the right is blocked with the synthesized peptide.