



Ribosomal Protein L14 Polyclonal Antibody

Catalog No	YP-Ab-04129
Isotype	IgG
Reactivity	Human;Mouse;Rat
Applications	WB;ELISA;IHC
Gene Name	RPL14
Protein Name	60S ribosomal protein L14
Immunogen	The antiserum was produced against synthesized peptide derived from human RPL14. AA range:71-120
Specificity	Ribosomal Protein L14 Polyclonal Antibody detects endogenous levels of Ribosomal Protein L14 protein.
Formulation	Liquid in PBS containing 50% glycerol, 0.5% BSA and 0.02% sodium azide.
Source	Polyclonal, Rabbit,IgG
Purification	The antibody was affinity-purified from rabbit antiserum by affinity-chromatography using epitope-specific immunogen.
Dilution	WB 1:500-2000;IHC-p 1:50-300; ELISA 2000-20000
Concentration	1 mg/ml
Purity	≥90%
Storage Stability	-20°C/1 year
Synonyms	RPL14; 60S ribosomal protein L14; CAG-ISL 7
Observed Band	26kD
Cell Pathway	cytoplasm,cytosol,ribosome,cell-cell adherens junction,membrane,cytosolic large ribosomal subunit,extracellular exosome,
Tissue Specificity	Brain,Cervix carcinoma,Dermoid cancer,Epithelium,Kidney,Muscle,Ovary,Pancreas,Skin,
Function	polymorphism:The poly-Ala stretch is highly polymorphic.,similarity:Belongs to the ribosomal protein L14e family.,
Background	Ribosomes, the organelles that catalyze protein synthesis, consist of a small 40S subunit and a large 60S subunit. Together these subunits are composed of 4 RNA species and approximately 80 structurally distinct proteins. This gene encodes a ribosomal protein that is a component of the 60S subunit. The protein belongs to the L14E family of ribosomal proteins. It contains a basic region-leucine zipper (bZIP)-like domain. The protein is located in the cytoplasm. This gene contains a trinucleotide (GCT) repeat tract whose length is highly polymorphic; these triplet repeats result in a stretch of alanine residues in the encoded protein. Transcript variants utilizing alternative polyA signals and alternative 5'-terminal exons exist but all encode the same protein. As is typical for genes encoding ribosomal proteins, there are multiple processed pseudogenes of this gene dispersed through the genome.

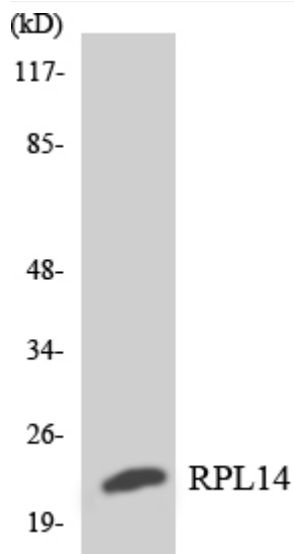
**matters needing attention**

Avoid repeated freezing and thawing!

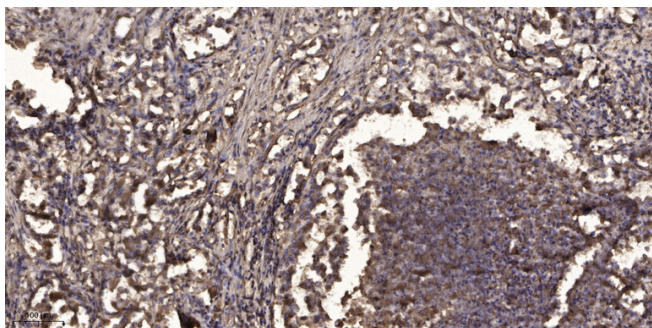
Usage suggestions

This product can be used in immunological reaction related experiments. For more information, please consult technical personnel.

Products Images



Western blot analysis of the lysates from Jurkat cells using RPL14 antibody.



Immunohistochemical analysis of paraffin-embedded human Squamous cell carcinoma of lung. 1, Antibody was diluted at 1:200(4° overnight). 2, Tris-EDTA,pH9.0 was used for antigen retrieval. 3,Secondary antibody was diluted at 1:200(room temperature, 45min).