



RGS5 Polyclonal Antibody

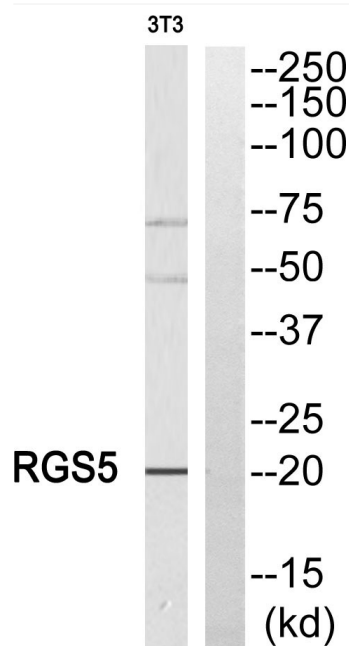
Catalog No	YP-Ab-04124
Isotype	IgG
Reactivity	Human;Mouse;Rat
Applications	WB;IHC;IF;ELISA
Gene Name	RGS5
Protein Name	Regulator of G-protein signaling 5
Immunogen	The antiserum was produced against synthesized peptide derived from human RGS5. AA range:89-138
Specificity	RGS5 Polyclonal Antibody detects endogenous levels of RGS5 protein.
Formulation	Liquid in PBS containing 50% glycerol, 0.5% BSA and 0.02% sodium azide.
Source	Polyclonal, Rabbit,IgG
Purification	The antibody was affinity-purified from rabbit antiserum by affinity-chromatography using epitope-specific immunogen.
Dilution	WB: 1/500 - 1/2000. IHC: 1/100 - 1/300. ELISA: 1/20000.. IF 1:50-200
Concentration	1 mg/ml
Purity	≥90%
Storage Stability	-20°C/1 year
Synonyms	RGS5; Regulator of G-protein signaling 5; RGS5
Observed Band	20kD
Cell Pathway	[Isoform 1]: Cytoplasm . Membrane .; [Isoform 2]: Cytoplasm .
Tissue Specificity	Aorta,Brain,Human cervix,Liver,Neuroblastoma,Normal aorta,
Function	function:Inhibits signal transduction by increasing the GTPase activity of G protein alpha subunits thereby driving them into their inactive GDP-bound form. Binds to G(i)-alpha and G(o)-alpha, but not to G(s)-alpha.,similarity:Contains 1 RGS domain.,
Background	This gene encodes a member of the regulators of G protein signaling (RGS) family. The RGS proteins are signal transduction molecules which are involved in the regulation of heterotrimeric G proteins by acting as GTPase activators. This gene is a hypoxia-inducible factor-1 dependent, hypoxia-induced gene which is involved in the induction of endothelial apoptosis. This gene is also one of three genes on chromosome 1q contributing to elevated blood pressure. Alternatively spliced transcript variants have been identified. [provided by RefSeq, Dec 2011],
matters needing attention	Avoid repeated freezing and thawing!



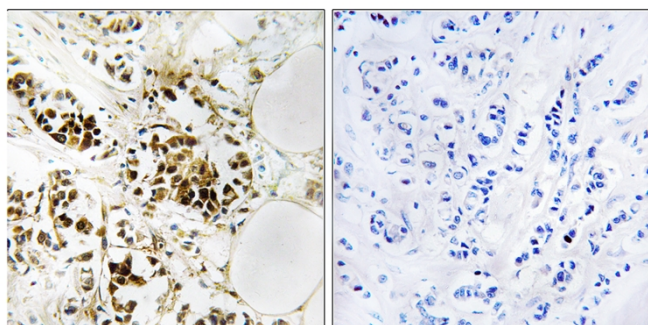
Usage suggestions

This product can be used in immunological reaction related experiments. For more information, please consult technical personnel.

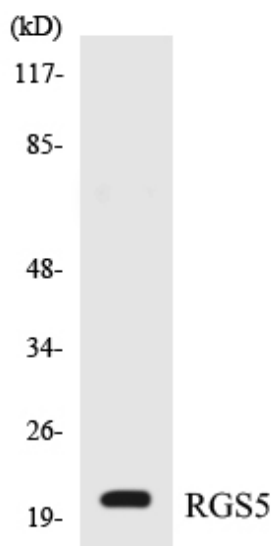
Products Images



Western blot analysis of RGS5 Antibody. The lane on the right is blocked with the RGS5 peptide.



Immunohistochemistry analysis of paraffin-embedded human breast carcinoma, using RGS5 Antibody. The lane on the right is blocked with the RGS5 peptide.



Western blot analysis of the lysates from HepG2 cells using RGS5 antibody.