

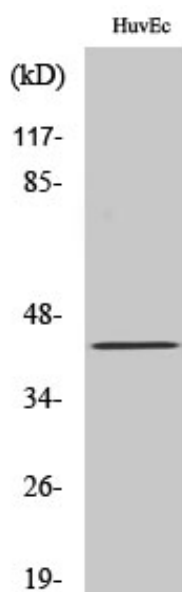


# RFPL4A Polyclonal Antibody

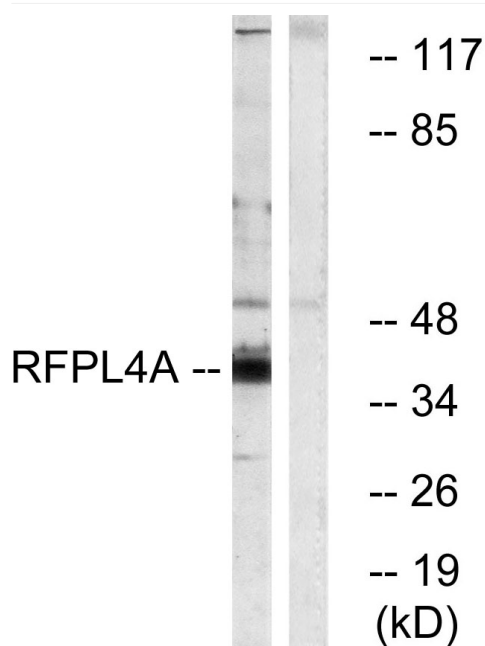
|                                  |   |
|----------------------------------|---|
| <b>Catalog No</b>                | YP-Ab-04117   |
| <b>Isotype</b>                   | IgG   |
| <b>Reactivity</b>                | Human;Rat;Mouse;  |
| <b>Applications</b>              | WB;ELISA;IHC  |
| <b>Gene Name</b>                 | RFPL4A  |
| <b>Protein Name</b>              | Ret finger protein-like 4A  |
| <b>Immunogen</b>                 | The antiserum was produced against synthesized peptide derived from human RFPL4A. AA range:155-204                                |
| <b>Specificity</b>               | RFPL4A Polyclonal Antibody detects endogenous levels of RFPL4A protein.   |
| <b>Formulation</b>               | Liquid in PBS containing 50% glycerol, 0.5% BSA and 0.02% sodium azide.   |
| <b>Source</b>                    | Polyclonal, Rabbit,IgG  |
| <b>Purification</b>              | The antibody was affinity-purified from rabbit antiserum by affinity-chromatography using epitope-specific immunogen.             |
| <b>Dilution</b>                  | WB 1:500-2000;IHC-p 1:50-300; ELISA 2000-20000  |
| <b>Concentration</b>             | 1 mg/ml   |
| <b>Purity</b>                    | ≥90%  |
| <b>Storage Stability</b>         | -20°C/1 year  |
| <b>Synonyms</b>                  | RFPL4A; RFPL4; RNF210; Ret finger protein-like 4A; RING finger protein 210  |
| <b>Observed Band</b>             | 42kD  |
| <b>Cell Pathway</b>              | Cytoplasm . Nucleus .   |
| <b>Tissue Specificity</b>        |   |
| <b>Function</b>                  |   |
| <b>Background</b>                | The ret finger protein-like 4 gene, Rfpl4, encodes a putative E3 ubiquitin-protein ligase expressed in adult germ cells.          |
| <b>matters needing attention</b> | Avoid repeated freezing and thawing!  |
| <b>Usage suggestions</b>         | This product can be used in immunological reaction related experiments. For more information, please consult technical personnel. |



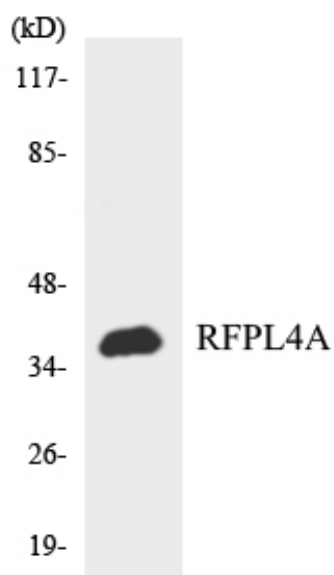
## Products Images



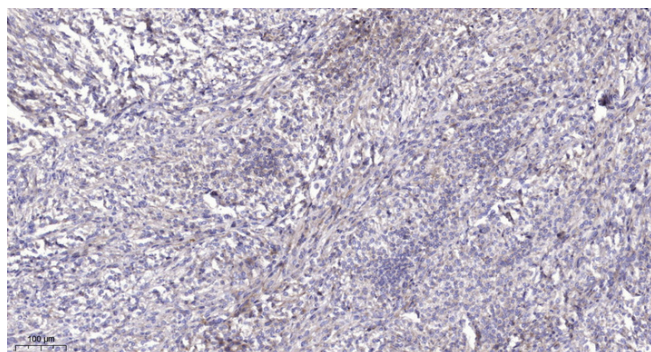
Western Blot analysis of various cells using RFPL4A Polyclonal Antibody



Western blot analysis of lysates from HUVEC cells, using RFPL4A Antibody. The lane on the right is blocked with the synthesized peptide.



Western blot analysis of the lysates from HeLa cells using RFPL4A antibody.



Immunohistochemical analysis of paraffin-embedded human Colon cancer. 1, Antibody was diluted at 1:200(4° overnight). 2, Tris-EDTA,pH9.0 was used for antigen retrieval. 3,Secondary antibody was diluted at 1:200(room temperature, 45min).