



Recoverin Polyclonal Antibody

Catalog No	YP-Ab-04114
Isotype	IgG
Reactivity	Human;Mouse
Applications	WB;IHC;IF;ELISA
Gene Name	RCVRN
Protein Name	Recoverin
Immunogen	The antiserum was produced against synthesized peptide derived from human Recoverin. AA range:107-156
Specificity	Recoverin Polyclonal Antibody detects endogenous levels of Recoverin protein.
Formulation	Liquid in PBS containing 50% glycerol, 0.5% BSA and 0.02% sodium azide.
Source	Polyclonal, Rabbit,IgG
Purification	The antibody was affinity-purified from rabbit antiserum by affinity-chromatography using epitope-specific immunogen.
Dilution	Western Blot: 1/500 - 1/2000. Immunohistochemistry: 1/100 - 1/300. Immunofluorescence: 1/200 - 1/1000. ELISA: 1/20000. Not yet tested in other applications.
Concentration	1 mg/ml
Purity	≥90%
Storage Stability	-20°C/1 year
Synonyms	RCVRN; RCV1; Recoverin; Cancer-associated retinopathy protein; Protein CAR
Observed Band	23kD
Cell Pathway	Photoreceptor inner segment . Cell projection, cilium, photoreceptor outer segment . Photoreceptor outer segment membrane ; Lipid-anchor ; Cytoplasmic side . Perikaryon . Primarily expressed in the inner segments of light-adapted rod photoreceptors, approximately 10% of which translocates from photoreceptor outer segments upon light stimulation (By similarity). Targeting of myristoylated protein to rod photoreceptor outer segments is calcium dependent (By similarity).
Tissue Specificity	Retina and pineal gland.
Function	disease:Identified as the antigen in cancer-associated retinopathy, an autoimmune disease of the retina caused by a tumor in another tissue.,function:Seems to be implicated in the pathway from retinal rod guanylate cyclase to rhodopsin. May be involved in the inhibition of the phosphorylation of rhodopsin in a calcium-dependent manner. The calcium-bound recoverin prolongs the photoresponse.,miscellaneous:Binds two calcium ions; one with high affinity, the other with low affinity.,similarity:Belongs to the recoverin family.,similarity:Contains 4 EF-hand domains.,tissue specificity:Retina and pineal gland.,



Background

This gene encodes a member of the recoverin family of neuronal calcium sensors. The encoded protein contains three calcium-binding EF-hand domains and may prolong the termination of the phototransduction cascade in the retina by blocking the phosphorylation of photo-activated rhodopsin. Recoverin may be the antigen responsible for cancer-associated retinopathy. [provided by RefSeq, Jul 2008],

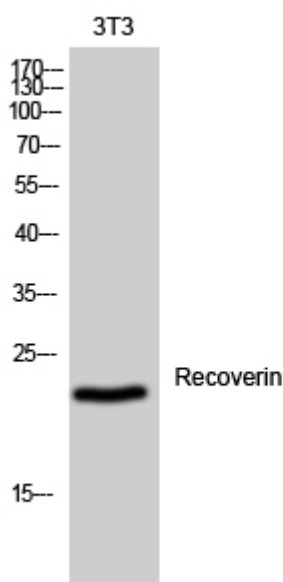
matters needing attention

Avoid repeated freezing and thawing!

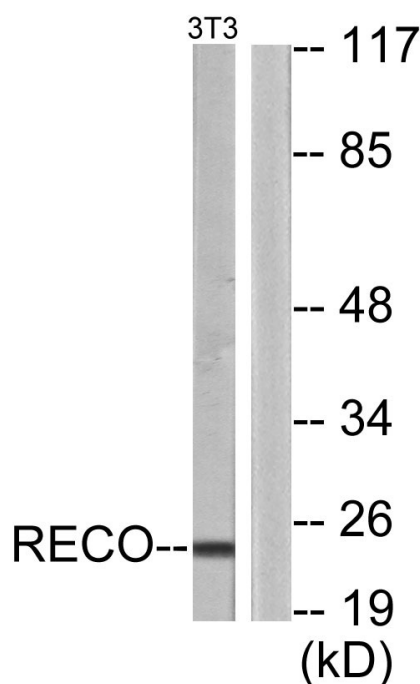
Usage suggestions

This product can be used in immunological reaction related experiments. For more information, please consult technical personnel.

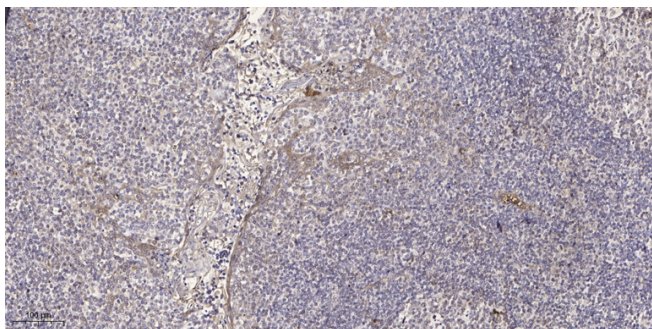
Products Images



Western Blot analysis of 3T3 cells using Recoverin Polyclonal Antibody



Western blot analysis of lysates from NIH/3T3 cells, using Recoverin Antibody. The lane on the right is blocked with the synthesized peptide.



Immunohistochemical analysis of paraffin-embedded human tonsil. 1, Antibody was diluted at 1:200(4° overnight). 2, Tris-EDTA,pH9.0 was used for antigen retrieval. 3,Secondary antibody was diluted at 1:200(room temperature, 30min).